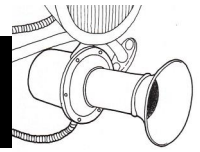
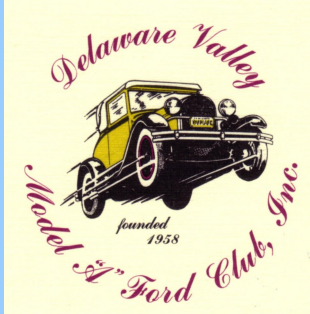




THE KLAXON



February 2015



Inside this Month:

President's message	2
Birthday's	2
Local Events	3
Hellertown Show	6
Winter Photos	7
More Pictures	8
Message from Henry	12
Parting Shot	14

And much more in this issue.....



The Newsletter of the

Delaware Valley Model A Ford Club, Inc.

Founded in 1958

Who are we:

The Klaxon is the monthly newsletter of the Delaware Valley Model "A" Ford Club, Inc. and is circulated to all club members and other interested clubs. The club meets on the first Thursday of each month at 7:30pm at Daley's Service Center, 2749 Bristol Pike, Bensalem, PA 19020.

If you wish to contribute articles for publication in the Klaxon please do so by submitting them to the editor Jim Maier. Other pertinent information can be obtained from the officers.

Technical and historical questions are encouraged and we'll do our best to get the answers. Questions can be submitted via E-Mail at: M2116x6@comcast.net.

Club Officers

President – Ted Kulesza	215-901-4305
Vice President – Joe Chamberlain	215-385-4989
Secretary – Don Fortune	215-698-1256
Treasurer – Don O'Hara	215-338-6368
Editor - Jim Maier	267-918-2078
National Director – Mike Etling	610-505-4504
Activities/Parades – Ted Etling	215-802-8622

<http://www.dvmafc.org/>

President's Message



Greetings: As we start our 57th year our club is alive and well. Our membership is still growing each month. It never ceases to amaze me the friendship and knowledge gained through this club.

Spring is just a couple of months away and there is plenty of time to catch up on any repairs or replacements needed to bring our Model A's up to date

for the spring and summer season.

For those who could not make the January meeting Bob Russell gave an excellent program an explanation on Model A shocks and seat extensions.

I would like to take this opportunity to thank past president Jim Maier for stepping up and taking over the klaxon, it is not an easy task but I know he will do a great job. I also want to thank Steve Organ for his years of service to the club.

See you soon.

Ted



Editor's Message

Hello: As we begin with a new editor for the Klaxon, I would like to thank

Steve Organ for faithfully publishing the Klaxon for the last few years. He has done a tremendous job. Hopefully I can measure up to that.

As a working stiff, I do feel that I am out of the loop since I am unable to attend the breakfasts during the week. If there is anyone ill that should be mentioned in the %ick list+, please let me know. Likewise with any other news or events that should be included in the newsletter.

In this issue I have included a few local auto related events that are of interest to some of our members. Since these events are not specific to our club, they are not included on our new event schedule.

See you on the 5th!

Jim

Up Coming Events

2/5/2015 Monthly Meeting at Daley's Service Center

3/5/2015 Monthly Meeting at Daley's Service Center

Happy Birthday for

February 2015!

Dick Wainwright	3
Michael Jones	7
Lin Bethman	12
Rich Nash	13
Maria Amodeo	21



UPCOMING AUTO RELATED EVENTS

From Hemmings Motor News

AACA National Annual Meeting

February 12 to February 14, 2015

The 79th AACA Annual Meeting will take place February 12-14, 2015, in Philadelphia, Pennsylvania. If you have never been to an AACA Annual Meeting in the City of Brotherly Love you are missing a great time. The trade show, car exhibit, great seminars and museum auction are just a few of the highlights you'll experience during the meeting. Registration Deadline: February 2, 2015.

When: February 12, 2015

Location:

Sheraton Philadelphia Downtown Hotel, 201 North 17th Street
Philadelphia PA, 19103

Cost: AACA members ONLY, \$20 pp plus meals & special events
To Register call AACA at 7175341910

Hamburg Swap Meet & Car Corral

February 22, 2015 7:00 a.m. - 2:00 p.m.

Over 100 Indoor Spaces & Unlimited Outdoor spaces & Car Corral. Handicap Friendly. Refreshments Available. Rain or Shine. For Vendor spaces call Shirley @ 610-262-9718.

Sponsor: Ontelaunee Region AACA

When: February 22, 2015 7:00 a.m. - 2:00 p.m.

Location: Hamburg Fire Co. Field House, 127 South 4th St. Rear, Hamburg, PA 19526

Cost: \$2.00 Adults, Children under 12 FREE

To Register call Lester Manwiller at 610-823-4656 or call Shirley Schaffer at 610-262-9718

Studebaker York Swap Meet

March 05 to March 07, 2015

The Studebaker York Swap Meet is the original and longest running ALL-STUDEBAKER swap meet in the world. 2015 marks our 42nd continuous year. The meet is family friendly and features most any Studebaker part one may need, a large community craft show, autos for sale, both stock and modified cars on display, and best of all these events are free. There is also a flower and garden show running at the Expo center that offers additional opportunities for the ladies not interested in cars or crafts to occupy themselves. That event is not part of the SYSM and there is an admission charge. There are vendor spaces still available for the SYSM. Contact Bob Sheaffer at 717-341-3141 for information, or go to our website www.sdckeystoneregion.com. We are also offering a raffle car, a 1951 Studebaker Landcruiser. Tickets are \$10.00 and less than 1000 remain to be sold as of 1/15/15.

(Continued on page 4)

(Continued from page 3)

Second prize is \$2000.00 cash. Winners will be drawn at the meet on Saturday March 7th at 2pm. Winners need not be present. You may call the raffle car chair, Gordon Kertzel at 717-574-1529 for ticket information or go to the website to order. Pictures are also available for viewing on the website. Please join us for this exciting and fun pre-spring event at the York Expo Center 334 Carlisle Ave. York, PA. 17404

Sponsor: Keystone Region Chapter, Inc. Studebaker Driver's Club

When: March 05, 2015 3/ 5/15 12pm-5pm. 6th 8am-5pm, 7th 8am-2pm

Location: York Expo Center 334 Carlisle ave. York, Pa 17404

Cost: Free parking, free admission to two heated buildings, auction Friday ev. with free food and drinks

To Register call Robert Sheaffer at 717-341-3141 or call Gordon F. Kertzel at 717-574-1529

Lincoln Spring Swap Meet

March 20 to March 21, 2015

JOIN US for our 40th annual Lincoln Zephyr Owners Club sponsored Early Spring Swap meet. This event features the largest collection of Lincoln parts vendors ... at a single gathering ... on the East Coast. Plan to attend this EXCITING event in Lancaster, PA at the Lancaster Host Resort, where there is LOTS TO DO for the whole family. Make it a GETAWAY weekend. March 20-21, 2015, opens 8am each day

Sponsor: Lincoln Zephyr Owners Club

When: March 20, 2015 8am

Location: 2300 Lincoln Highway East Route 30 Lancaster PA, 17602

Cost: NO CHARGE

To Register call Nathan Olweiler at 717-602-6333

44th Annual Swap Meet (Formerly known as “Cowtown”)

March 22, 2015 8:00 AM - 3 PM

South Jersey Region AACA Swap Meet at Salem County Fairgrounds, 735 US Rt. 40, Woodstown, NJ. 1/4 miles west of Cowtown.

Sponsor: South Jersey Region, AACA

When: March 22, 2015 8:00 AM - 3 PM

Location: Salem County Fairgrounds, 735 US Rt. 40 Woodstown NJ, 08098

Cost: Parking donation

To Register call Chuck Gibson at 609-221-5435

A law firm that considers it a privilege to help you.



Personal Injury & Wrongful Death | Workers' Compensation | Estate Planning, Probate, & Estate Administration
Family Law | Real Estate Law | Business Law | Criminal Law | Municipal Law | School Law | Elder Law

BC & M

BEGLEY, CARLIN & MANDIO, LLP

Serving Bucks County residents and businesses for all their legal needs.

680 Middletown Boulevard | Langhorne, PA 19047 | 215-750-0110 | www.begleycarlin.com

OPEN MON. - FRI. 8:30 - 5:00

Henry's Alternator Exchange, Inc.

STARTERS - ALTERNATORS
(REBUILT OR EXCHANGED)

Electrical Short Specialist

Phone: 215-355-0585

Fax: 215-396-0924

henryalt@verizon.net

1712 BROWNSVILLE ROAD

TREVOSE, PA 19053

www.henrysalternator.com

THOMAS J. ROBERTS & DAUGHTERS

REGISTERED PLUMBING & HEATING

(215) 744-7179



REG. #3300



Dan Marseglia
President

DLMSalesLLC@hotmail.com

Phone: (215) 570-4494

Fax: (215) 405-2538

P.O. Box 696

Langhorne, PA 19047

"ONE MILE AHEAD"
Smith and Jones
Antique Auto Parts
60 Wisconsin St., W. Columbia, SC 29170
803/822-4141 FAX 803/822-8477

Quality Parts
Same Day Shipping
Established 1972
156 Page Catalog
Order Desk 800-422-1928

www.snjparts.com

Hellertown Model A Ford Day

Hosted by: Hellertown Historical Society & Lehigh Valley Model A Ford Club

Sunday, April 26 | 9 am to 3 pm
rain or shine

- Mill Tours
- Concessions
- Free to All



Grist Mill Park

Located on West Walnut Street right off
Route 412 (Main Street), Hellertown, PA



ALL Model A Fords Welcome

- NO Car Registration Fee
 - Swap Meet & Flea Market
 - Model A History
 - Technical Sessions
- Swap meet spots are a \$10 Donation • Model A and Early Ford Parts

If you're bringing an "A", please contact:

Nelson Chegezy, telephone 610-867-4395 or nsc0646@verizon.net or lvmodelaclub@gmail.com

Z-Designs • timzavacki@gmail.com



Once again this year Joan Ferris is selling calendars to benefit the Viet Nam Veteran's.

The calendar will contain a PA Lottery Number for the evening drawing. The cost is \$35.00.

Contact Joan directly at:

1-856-662-3239

HELP SUPPORT THE VIET NAM ERA

Hemmings Motor News Online maintains a Blog which has many interesting photos. Here are a few “seasonally appropriate” images.



Who says racing is a warm weather sport? Ever try racing on ice? Chariots-of-ice-winter-lake-racing-in-new-England

Continued on next page

Today's car spotting comes from Toronto, Ontario, circa 1961. What cars can you identify in this snow-covered street scene?



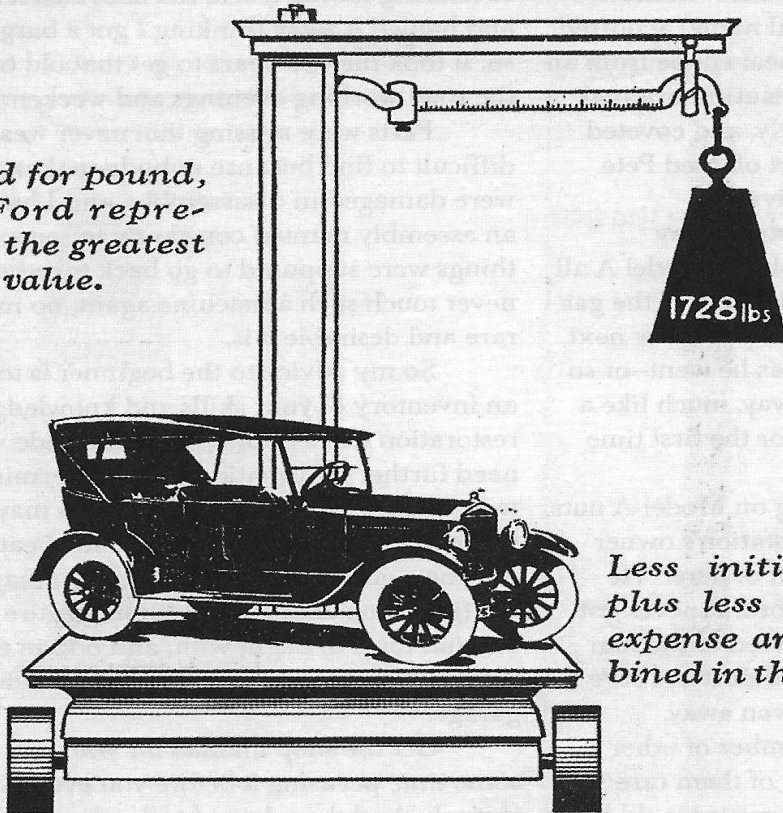
Car spotting visits a post-snowfall Boston, sometime in the 1950s. What cars can you identify?

Car spotting heads to Arlington, Virginia, in the winter of 1966. What snow-bound cars can you identify?



Price per Lb. Comparison Ford Touring vs. Other Makes

*Pound for pound,
the Ford repre-
sents the greatest
value.*



*Less initial cost
plus less upkeep
expense are com-
bined in the Ford.*

2955 LBS
39¢ LB.
BUICK

2300 LBS
37¢ LB.
CHRYSLER

1985 LBS
32¢ LB.
OVERLAND
WHIPPET MODEL

2567 LBS
31¢ LB.
DODGE

1870 LBS
28¢ LB.
CHEVROLET

1728
21¢ LB.
FORD

*All Prices Include Starter and Balloon Tires.
As of September, 1926.*



CHRIS
SILQUINI
OPTICIAN



PA STATE INSPECTION

EMISSION TESTING



All Types of Auto & Truck Repairs
Complete Computer Diagnostics
39 Years of Service

114 Reetz Avenue • Hulmeville, PA 19047

215-752-3041

2540 Huntingdon Pike
Huntingdon Valley,
Pennsylvania 19006
215-947-3331 P
215-947-3346 F
ultimoeeyewear@verizon.net

ULTIMO EYEWEAR

BRATTON'S

ANTIQUE AUTO PARTS



800-255-1929 Phone

www.brattons.com

800-774-1930 Fax

1606 Back Acre Circle

Mount Airy, MD 21771

Your source for Quality Model A Ford Parts since 1976

General Insurance & Surety Bonds Since 1929

www.brucebeaton.com

W. Bruce Beaton
Company Inc.

Janice L. Gill

Account Manager

janice@brucebeaton.com

1390 Industrial Blvd.
Southampton, PA 18966

215.942.2800

215.942.2882 (fax)

MLG Business Center
4501 Route 42, Suite 7

Turnersville, NJ 08012

856.728.7351

856.728.7355 (fax)

Greg Longs Gym

85 EAST STREET RD. • FEASTERVILLE, PA 19047
UNDER MICHAELS CRAFT & FLORAL
215-364-1168

- 10 M SQ FT WORKOUT AREA
- 5 TONS OF FREE WEIGHTS
- CARDIO EQUIPMENT
- BODY MASTERS
- PRO-SHOP
- NAUTILUS EQUIPMENT
- HAMMER STRENGTH
- KAISER AIR MACHINE
- TANNING BEDS
- PERSONAL TRAINING

FREE WORKOUT WITH THIS CARD

Fire Alarm - Security - C.C.T.V. - Card Access
Phone & Date Line Services

CUSTOM ALARM SERVICES

1289 ARBUTUS AVE.
LANGHORNE, PA.
(215) 752-9777

Fully Insured
A. John Korhonen

24 Hour Monitoring
Services & Sales

Etling's Antique Auto

SERVICE & REPAIR

Specializing In The

Model "A" Ford

Model "T" Ford • Early Ford V 8

**100 SPRING VALLEY WAY
ASTON, PA 19014**

**MICHAEL T. ETLING
610-505-4504**

Mike's "A" Ford-able Parts

Mike Butcher



124 Model A Drive, Maysville, GA 30558

email: mike@mikes-afordable.com - www.mikes-afordable.com

Fax: 706 652 2492 - Phone: 706 652 3866

1 888 TRY MIKE (879 6453)



Specialising in 1928 - 1931 Model A Ford Parts

215-638-1820
215-639-9803
Fax 215-638-9392

State Inspection
Emission Testing
Towing

DALEY SERVICE CENTER
Auto & Truck Repair

2749 Bristol Pike
Bensalem, PA 19020



JOHN DALEY ENTERPRISES, INC.

Custom Building & Cabinetry
CBC Thomas Smith

215.817.3109

858 Sackettsford Road
Ivyland, Pennsylvania 18974



1909-48 Ford Parts & Accessories

800.242.6491

www.gaslightauto.com



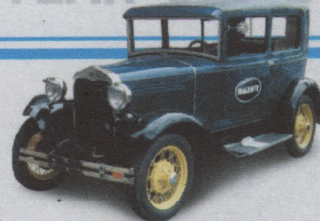
Gaslight Auto Parts



Meet Jonathan HAGERTY'S PRE-WAR SPECIALIST

**I'M JUST YOUR AVERAGE
89-YEAR-OLD**

LIVING IN A 29-YEAR-OLD'S BODY.



Ever feel like you were born in the wrong era? Jonathan, Hagerty's pre-war car specialist, does. He drove a '30 Model A every day for a year. Jonathan's just one of our many specialists, here to make sure our clients get the knowledge and service they expect.

An absurd dedication to collector cars. It's another reason why if you have a classic, you belong with Hagerty.



The Classic Car Insurance Specialists | 877-922-1706 | WWW.HAGERTY.COM



A message from Henry Ford

"On October 1, 1908, we made the first Model T Ford car. On May 26, 1927, our production of that one model had reached 15,000,000.

"Those were important milestones in the progress of the Ford Motor Company. They were great days in the life of the automobile industry itself. Still greater days are just ahead.

"I refer to the first official introduction of the new Ford car to the public.

The result of years of planning

"This new Ford car has not been planned and made in a day. Our engineers began work on it several years ago and it has been in my mind much longer than that. We make automobiles quickly when we get into production. But we take a long time planning them. Nothing can hurry us in that. We spent twelve years in perfecting our former Model T Ford car before we offered it to the public. It is not conceivable that we should have put this new Ford car on the market until we were sure that it was mechanically correct in every detail.

"Every part of it has been tested in actual practice. There is no guessing as to whether it will be a successful model. It has to be. There is no way it can escape being so, for it represents the sum total of all we have learned about motor-car building in the lifetime of the Ford business.

An entirely new and modern car

"The new Ford car is distinctly a new and modern car, designed to meet new and modern conditions. It is more than a new automobile. It is the advanced expression of a wholly new idea in modern, economical transportation.

"The minute you see it—ride in it—you will know that it is not a mere refinement of the former Model T Ford, but a new car from radiator cap to rear axle. There is nothing quite like it anywhere in quality and price.

"The new Ford car has exceptional beauty of line and color, because beauty of line and color has come to be considered, and I think rightly, a necessity in a motor-car today.

"The new Ford car has durability and stamina because those two qualities are the very heart of motor-car value. The Ford car has always been known as a car that will take you there and bring you back. This new car will not only do that, but it will do it in good style.

"The new Ford car has unusual speed for a low price car. It will do 55 and 65 miles an hour. It has actually exceeded 65 miles an hour on road tests. It will be even easier to handle in

traffic than the Model T. I call your attention especially to the safety accorded by the new brakes as an indication of this.

"The new Ford car will be economical to operate, because economy in operation is always essential and desirable.

Why the price is so low

"The price of the new Ford car is low in accordance with the established Ford policy. I hold—and have always held—that it is better to sell a large number of cars at a reasonably small margin of profit than to sell a few cars at a large margin of profit.

"No other automobile manufacturer can duplicate the new Ford car at the Ford price because no other manufacturer does business in exactly the way we do.

"We make our own steel—we make our own glass—we mine our own coal—we make practically every part used in the Ford car. But we do not charge a profit on any of these items or from these operations. We would not be playing fair with the public if we did so. Our only business is the automobile business. Our only profit is on the automobile we sell.

"We are able to sell this new Ford car at a low price because we have found new ways to give greater value without a great increase in our own costs.

"In view of the importance of the new Ford car and the character of it, we have taken great care in planning the manner of its introduction.

"Details of the complete program are given on the following pages of this portfolio. I ask that you follow this program closely and exactly. In your own interest, it is important that you do so.

The new Ford car will be well advertised

"You will be especially glad to know, I am sure, that we are going to use liberal space in the newspapers to advertise this new car. This space will be paid for wholly by the Ford Motor Company. You will share the benefits of this advertising, but you will bear no part in the expense of it.

"The five full pages which will be used to announce the new Ford car are but a part of our program. We have made this car for millions of people. We will tell the story of it to those millions through our advertising.

"We predict for this new Ford car the most enthusiastic reception that has ever been given a new car. To Ford dealers it offers an unusual opportunity for large sales."

Henry Ford

GENERAL PAINTING OF PENNSYLVANIA INC.

Robert A. Miller
President

(610) 783-0808
(610) 831-0134 Fax
RMILLER@generalpainting.com

"Protecting Surfaces Since 1973"

MAY RENOVATIONS

Painting, Carpentry, Landscaping,
Paperhanging, Minor Electrical

Kevin May

(215) 584-3387

BANINS AUTO AUTO & TRUCK RESTYLING

Wheels, Tires,
Electronics, & Custom
Accessories

Expert Custom Installations

baninsauto@verizon.net
baninsauto.com

1820 Brownsville Rd
Trevose, PA. 19053
215-357-3783

Manhattan Bagel

Ronak Patel
Owner



108 N. Flowers Mill Road
Langhorne, PA 19047

Ph: (215) 702-0528
Fax: (215) 702-0613

MNRPALLC@GMAIL.COM



9010 Roosevelt Blvd
Philadelphia, PA 19115
Ph. 215.677.3916
Fax. 215.676.8279

Open 24 hours...7 days a week ~ Take out available
Banquet facilities ~ Baking done on premises



DR. JONATHAN W. McCULLOUGH, F.A.C.O.

FELLOW ACADEMY OF CHIROPRACTIC ORTHOPAEDISTS

Hours By Appointment
(215) 946-0444

35 Lakeside Drive
Levittown, PA 19054

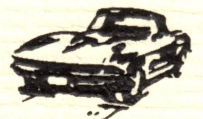
www.mcculloughchiropractic.com

Neshaminy Antique

Automobile Appraisals

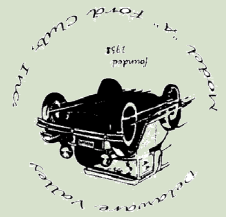
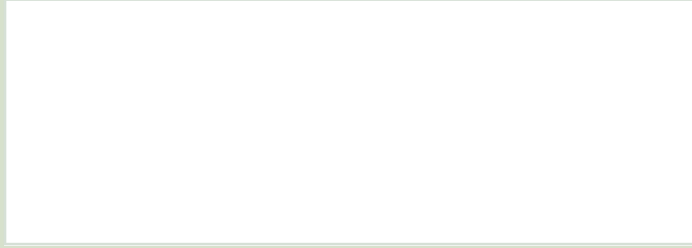
Langhorne, Pa. 215-962-9480
www.neshaminyappraisals.com

Schmidt Auto Body Inc.



613 BATH STREET
BRISTOL, PA 19007

SHOP (215) 785-5776
FAX (215) 785-3864



1648 W. Superhighway
Langhorne, PA. 19047



Photo by Andy Brandley. Hellertown Show 4/26/14