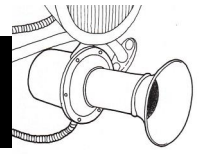
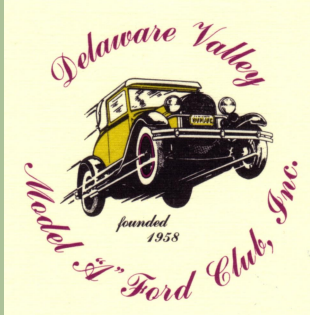




# THE KLAXON



February 2018



## Inside this Month:

|                       |    |
|-----------------------|----|
| President's message   | 2  |
| Birthday's            | 2  |
| Club Calendar         | 3  |
| Local Events          | 5  |
| Car for sale          | 8  |
| The new Ford for 1929 | 9  |
| Roster Update Form    | 10 |
| Model A Quiz          | 11 |
| Ignition Timing       | 12 |

And much more in this issue.....

The Newsletter of the

**Delaware Valley Model A Ford Club, Inc.**

**Founded in 1958**



The Etling's 1929 Pickup

**The Klaxon is the monthly newsletter of the Delaware Valley Model "A" Ford Club, Inc. and is circulated to all club members and other interested clubs. The club meets on the first Thursday of each month at 7:30pm at Daley's Service Center, 2749 Bristol Pike, Bensalem, PA 19020.**

**If you wish to contribute articles for publication in the Klaxon please do so by submitting them to the editor Jim Maier. Other pertinent information can be obtained from the officers. Technical and historical questions are encouraged and we'll do our best to get the answers. Questions can be submitted via E-Mail at: M2116x6@comcast.net.**

### Club Officers

|                                 |              |
|---------------------------------|--------------|
| President – David Miller        | 215-745-7247 |
| Vice Pres – Zach Demusz         | 267-423-1147 |
| Secretary – Don Fortune         | 215-698-1256 |
| Treasurer – Don O'Hara          | 215-338-6368 |
| Editor - Jim Maier              | 267-918-2078 |
| Nat'l Director – Mike Etling    | 610-505-4504 |
| Activities/Parades – Ted Etling | 215-802-8622 |

**<http://www.dvmafc.org/>**

# President's Message



## Greetings:

So far in my tenure as president I am 0 for 1, in my meetings scorecard. I always was a slow starter though. Here is hoping for a hit the next time up on Feb. 1. Three items come to mind for the next meeting. The first is dues and roster forms. It looks like we will be a month or so behind on that. So please make it a priority to fill out that form and pay your dues at the next meeting. The second item is the Model A event in April which in the past has been held in Hellertown, PA. This year it will be held in Trexlertown, PA . We will have more to say about this in the near future. Lastly, the Phila. car show was held on Monday, January 29th and hopefully some of the members attending the show can give us some highlights.

If anyone has any suggestions for topics of discussion at a meeting, or ideas for a tour, please let know.

Dave Miller



## Hello,

As Dave mentioned above, The Lehigh Valley Chapter Show that was previously held in Hellertown has been moved to Trexlertown. It will be at Goodwill Fire Company 7723 Hamilton Blvd. We will discuss a convoy at one of the upcoming meetings. A flyer will be in next months Klaxon.

There is a roster update form enclosed in this issue. Dues are now due. Forms will also be available at the meeting if you donq wish to separate the newsletter. Please fill out and return the form by February 15th to be included in the 2018 club roster.

Thank you,

See you on the 1st!

## Up Coming Events

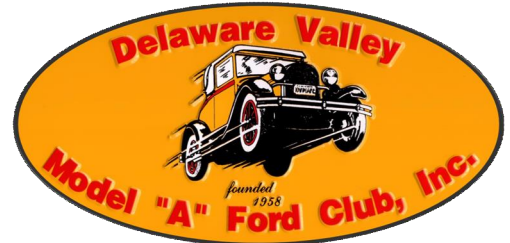
2/1/18 Monthly Meeting at Daley's Service Center

3/1/18 Monthly Meeting at Daley's Service Center

## Happy Birthdays for February 2018!

If we missed your birthday please let the editor know

|                 |    |
|-----------------|----|
| Dick Wainwright | 3  |
| Edward Mitchell | 5  |
| Mike Jones      | 7  |
| Lin Bethman     | 12 |
| Rich Nash       | 13 |
| Joy Johnson     | 22 |



# Delaware Valley Model A Ford Club 2018 Yearly Calendar of Events

## January

4 – Club Meeting – 7:30pm Daley’s

## February

1 – Club Meeting – 7:30pm Daley’s

## March

1 – Club Meeting – 7:30pm Daley’s

## April

5 – Club Meeting – 7:30pm Daley’s  
28 – Hellertown Model A Show

## May

3 – Club Meeting – 7:30pm Daley’s  
28 – Bensalem / Croydon Parades

## June

7 – Club Meeting – 7:30pm Daley’s  
2 – Holy Nativity Strawberry Fest in Rockledge

## July

4 – Lawncrest Parade – 8:30 Form up on Rising Sun Avenue above Knorr St.  
4 – Cheltenham Parade – 11:00 Form up on Ashmead Road at Front Street.  
5 – Club Meeting – 7:30pm Daley’s  
7 – Pennypack Woods Parade ~ Billy Long POC

## August

2 – Club Meeting – 7:30pm Daley’s

## September

6 – Club Meeting – 7:30pm Daley’s  
15 – International Model A Ford Day.  
?? – Club Banquet.

## October

4 – Club Meeting – 7:30pm Daley’s  
3 – 6 – Hershey AACA Meet

## November

1 – Club Meeting – 7:30pm Daley’s  
17 – Bristol Township Parade

## December

6 – Club Meeting – 7:30pm Daley’s

Please advise the editorial staff of any additional events, as well as any changes.



# A law firm that considers it a privilege to help you.



Personal Injury & Wrongful Death | Workers' Compensation | Estate Planning, Probate, & Estate Administration  
Family Law | Real Estate Law | Business Law | Criminal Law | Municipal Law | School Law | Elder Law

## BEGLEY, CARLIN & MANDIO, LLP

Serving Bucks County residents and businesses for all their legal needs.

680 Middletown Boulevard | Langhorne, PA 19047 | 215-750-0110 | 123 W. Bridge Street | New Hope PA 18938 | 215-862-0701

[www.begleycarlin.com](http://www.begleycarlin.com)

OPEN MON. - FRI. 8:30 - 5:00

*Henry's Alternator Exchange, Inc.*

**STARTERS - ALTERNATORS**  
(REBUILT OR EXCHANGED)

Electrical Short Specialist

Phone: 215-355-0585

Fax: 215-396-0924

[henryalt@verizon.net](mailto:henryalt@verizon.net)

1712 BROWNSVILLE ROAD

TREVOSE, PA 19053

[www.henrysalternator.com](http://www.henrysalternator.com)



**Dan Marseglia**  
President

[DLMSalesLLC@hotmail.com](mailto:DLMSalesLLC@hotmail.com)

P.O. Box 696  
Langhorne, PA 19047

Phone: (215) 570-4494

Fax: (215) 405-2538

**THOMAS J. ROBERTS & DAUGHTERS**

REGISTERED PLUMBING & HEATING

(215) 744-7179



REG. #3300



Quality Parts  
Same Day Shipping  
Established 1972  
156 Page Catalog  
Order Desk 800-422-1928



[www.snjparts.com](http://www.snjparts.com)



# UPCOMING LOCAL AUTO RELATED EVENTS

## From Hemmings Motor News and other sources

See enclosed club event listing for our club events

### SWAP MEET AND CAR CORRAL

**March 25, 2018 8 AM-3PM**

South Jersey Region, AACA 47th Annual Swap Meet and Car Corral. Salem County Fairgrounds, 735 Harding Hwy US 40, Woodstown, NJ. 08098. Sunday March 25, 2018, 8AM-3PM. Spaces \$35.00 in advance \$50.00 day of show. Chuck Gibson 609-221-5435.

**Sponsor:** South Jersey Region AACA

**When:** March 25, 2018 8 AM-3PM

**Location:**

Salem County Fairgrounds, 735 Harding Hwy US 40  
Woodstown, NJ, 08098

**Cost:** No charge for spectators

**To Register:** call Chuck Gibson at 609-221-5435 or call Gary Green at 856-575-5547

### LVMAC Trexlertown Model A and AA Show and Swap

**April 22, 2018 9am -3pm**

**Sponsor:** Lehigh Valley Model A Club and Goodwill Fire Company

**When:** April 22, 2018 9am -3pm

**Location:**

Goodwill Fire Company

7723 Hamilton Road

Breinigsville, PA. 18031

**Cost:** Free to attend, \$10 per swap space

**To Register:** call Bryan Grube / Tim Zavacki at 484.548.0632



Mike's "A" Ford-able Parts

Mike Butcher



124 Model A Drive, Maysville, GA 30558  
email: mike@mikes-afordable.com - www.mikes-afordable.com  
Fax: 706 652 2492 - Phone: 706 652 3866  
1 888 TRY MIKE (879 6453)



Specialising in 1928 - 1931 Model A Ford Parts

1909-48 Ford Parts & Accessories

800.242.6491

www.gaslightauto.com



Gaslight Auto Parts

NORPAC



NORTH PHILADELPHIA

JET CENTER

DIVISION

Fuel/Cargo Services  
Auto Rental  
Conf. Rooms/Catering

NORTHEAST PHILADELPHIA AIRPORT  
11301A NORCOM ROAD  
PHILADELPHIA, PA 19154  
ARINC 131.25

PHONE (215) 673-9000  
OFFICE FAX (215) 673-9184  
PILOT'S FAX (215) 673-8784  
www.nphilajetcenter.com

TED WARNEY  
GENERAL MANAGER

215-638-1820  
215-639-9803  
Fax 215-638-9392

State Inspection  
Emission Testing  
Towing

DALEY SERVICE CENTER  
Auto & Truck Repair

2749 Bristol Pike  
Bensalem, PA 19020



Email: Garage7124@aol.com

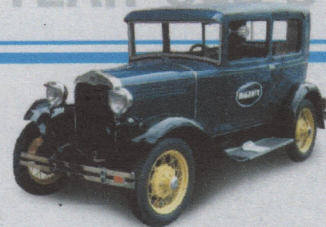
www.DaleysServiceCenter.com



Meet Jonathan HAGERTY'S PRE-WAR SPECIALIST

I'M JUST YOUR AVERAGE  
89-YEAR-OLD

LIVING IN A 29-YEAR-OLD'S BODY.



Ever feel like you were born in the wrong era? Jonathan, Hagerty's pre-war car specialist, does. He drove a '30 Model A every day for a year. Jonathan's just one of our many specialists, here to make sure our clients get the knowledge and service they expect.

An absurd dedication to collector cars. It's another reason why if you have a classic, you belong with Hagerty.

The Classic Car Insurance Specialists | 877-922-1706 | WWW.HAGERTY.COM





Fire Alarm - Security - C.C.T.V. - Card Access  
Phone & Date Line Services

## CUSTOM ALARM SERVICES

1289 ARBUTUS AVE.  
LANGHORNE, PA.  
(215) 752-9777

Fully Insured  
A. John Korhonen

24 Hour Monitoring  
Services & Sales

## Greg Longs Gym

85 EAST STREET RD. • FEASTERVILLE, PA 19047  
UNDER MICHAELS CRAFT & FLORAL  
215-364-1168

- 10 M SQ FT WORKOUT AREA
- 5 TONS OF FREE WEIGHTS
- CARDIO EQUIPMENT
- BODY MASTERS
- PRO-SHOP
- NAUTILUS EQUIPMENT
- HAMMER STRENGTH
- KAISER AIR MACHINE
- TANNING BEDS
- PERSONAL TRAINING

**FREE WORKOUT WITH THIS CARD**

General Insurance & Surety Bonds Since 1929

[www.brucebeaton.com](http://www.brucebeaton.com)

*W. Bruce Beaton*  
Company Inc.

**Janice L. Gill**

Account Manager

[janice@brucebeaton.com](mailto:janice@brucebeaton.com)

1390 Industrial Blvd. Southamptn, PA 18966  
**215.942.2800**  
215.942.2882 (fax)

MLG Business Center  
4501 Route 42, Suite 7  
Turnersville, NJ 08012  
**856.728.7351**  
856.728.7355 (fax)

## BRATTON'S

**ANTIQUE AUTO PARTS**



**800-255-1929 Phone**

**[www.brattons.com](http://www.brattons.com)**

800-774-1930 Fax

1606 Back Acre Circle

Mount Airy, MD 21771

*Your source for Quality Model A Ford Parts since 1976*

# Etling's Antique Auto

## SERVICE & REPAIR

## Specializing In The

## Model "A" Ford

## Model "T" Ford • Early Ford V 8

**100 SPRING VALLEY WAY  
ASTON, PA 19014**

**MICHAEL T. ETLING  
610-505-4504**



## FOR SALE

### FORD SHAY 1929 ROADSTER

**CONTACT Ron Kerr**

**(215) 757-5232**



## Neshaminy Antique



Langhorne, Pa.

215-962-9480

www.neshaminyappraisals.com

# CHRIS SILQUINI OPTICIAN



ULTIMO EYEWEAR

2540 Huntingdon Pike  
Huntingdon Valley,  
Pennsylvania 19006  
215-947-3331 P  
215-947-3346 F  
ultimoeyewear@verizon.net

# eld

## ASSOCIATED

ARCHITECTURE • PLANNERS

EDWIN L. DARDZINSKI RA  
Registered Architect

201 West Fairview Avenue  
Langhorne, Penna 19047  
tel/fax 215.752.6706  
Cell 215.262.6134  
email: eldarch@hotmail.com

## BERKSHIRE HATHAWAY

HomeServices



**Lisa Zampirri**  
REALTOR®

Fox & Roach, REALTORS®  
550 N. Main Street  
Doylestown, PA 18901  
Bus 215.348.1700 x132  
Cell 609.972.7439  
Direct 267.880.3041  
lisa.zampirri@foxroach.com



 A member of the franchise system of BHH Affiliates, LLC

## Liberty Mutual

INSURANCE

AUTO | HOME | LIFE

**Liberty Mutual Insurance**

104 Pheasant Run Suite 103  
Newtown, PA 18940  
Office: 215-579-9322 ext. 53222  
Fax: 603-430-5720  
Cell: 267-229-3272



PROUD PARTNER

Anthony Zampirri, Jr.  
Sales Representative  
Anthony.Zampirri@LibertyMutual.com

Have a good topic for an article? Why not jot it down and send it to the editorial staff for publication? Feel free to send it via snail mail, email, carrier pigeon or telegram.

We are also looking for members to do short tech talks at our meetings on various topics related to Model A Fords. If you are interested, please contact one of our officers to schedule a time.

## J&L VINTAGE TREASURES

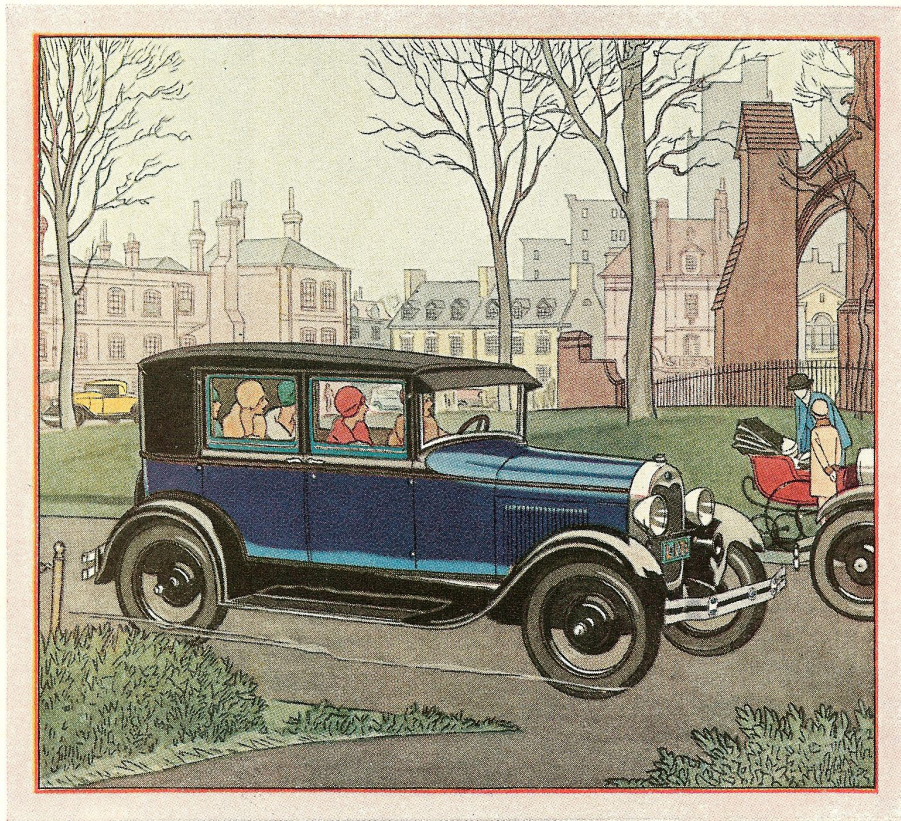
Jim & Lisa

A little bit of everything ... from pre-loved vintage treasures and antiques to current clothing, jewelry and accessories.



info@jlvintagetreasures.com  
jlvintagetreasures.com





## You will find the new Ford a comfortable easy-riding car

IN DAYS gone by, it was Mother who seemed destined to get most of the bouncing on those Sunday afternoon rides. Bumps that seemed like innocent little bumps to Dad in the front seat were quite large and aggravating by the time they reached the riders in the rear.

Perhaps Mother mentioned it in clear, brisk tones. Perhaps, being long-suffering, she didn't. There seemed no way it could be helped in

a low-priced car. Then along came the new Ford and with it a new idea of riding ease. Now there is no dividing line for comfort. Everybody can lean back and relax because even rough stretches may be taken at a reasonably fast pace without the exaggerated bouncing rebound which is the cause of most motoring fatigue.

This comfort means so much to the joy of motoring that it should be one of the first things you think about in selecting a motor car.

"Is it a comfortable car to drive?" is almost as important as "Is it an economical car to operate?"

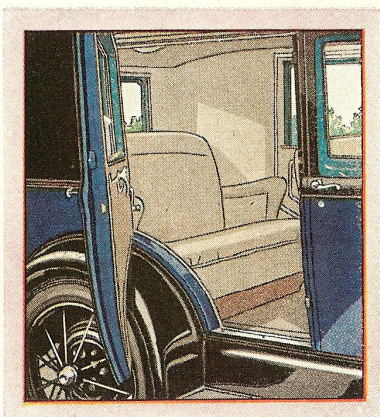
The new Ford brings you truly



FORD MOTOR COMPANY  
Detroit, Michigan

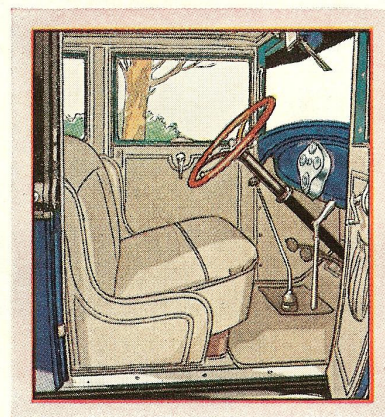
remarkable riding ease not only because of its low unsprung weight and transverse springs, but because it has four Houdaille hydraulic shock absorbers—two in the front and two in the rear.

Formerly these were installed as standard equipment on only the most expensive automobiles. Their use on the new Ford is an example of the quality built into every part of the car.



*Shown on the left is the interior of the new Fordor Sedan. Upholstery is soft and luxurious, yet long wearing. All appointments are fully nickeled. Note the wide door, the convenient arm rests, the air of restful riding comfort.*

*The illustration on the right shows the roominess of the front compartment of the new Fordor Sedan. Here, as in rear view, you can see the restful tilt of the wide, deeply cushioned seat—the richness of every detail of finish and appointment.*







## ROSTER UPDATE FORM – 2018

**DEADLINE FEBRUARY 15<sup>th</sup> for inclusion in 2018  
roster**

Name: \_\_\_\_\_

Address: \_\_\_\_\_

City: \_\_\_\_\_ State: \_\_\_\_\_ Zip: \_\_\_\_\_

**MARC ID Number:** \_\_\_\_\_

E-Mail: \_\_\_\_\_

Phone: \_\_\_\_\_ Cell: \_\_\_\_\_

Spouse/Partners Name: \_\_\_\_\_

Date of Birth:    Month \_\_\_\_\_ Day \_\_\_\_\_

Spouse/Partner    Month \_\_\_\_\_ Day \_\_\_\_\_

### Antique Car Details

**YOU MUST CARRY LIABILITY INSURANCE**

Vehicle #1    Year: \_\_\_\_\_ Make/Model: \_\_\_\_\_

Vehicle #2    Year: \_\_\_\_\_ Make/Model: \_\_\_\_\_

Vehicle #3    Year: \_\_\_\_\_ Make/Model: \_\_\_\_\_

Vehicle #4    Year: \_\_\_\_\_ Make/Model: \_\_\_\_\_

Use backside if you want more than 4 cars listed

ANNUAL MEMBERSHIP FEE IS \$15.00. Mail to:

Delaware Valley Model "A" Ford Club  
c/o Don O'Hara, Treasurer  
8717 Stardust Lane  
Philadelphia, PA 19136

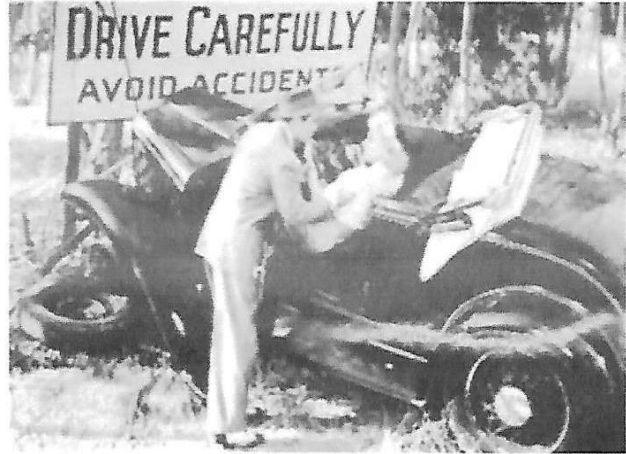
PLEASE COMPLETE THE UPDATE EVEN IF YOU ARE A LIFE MEMBER SO WE CAN  
UPDATE THE MEMBERSHIP ROSTER



## Model A Maintenance Quiz

Since we are coming into the touring season, many of us will be taking our Model A's out of the garage, here is a little maintenance quiz for you to review.

1. How many grease fittings are on a Model A?
  - a. 10-12
  - b. 28-31
  - c. 40-50
  - d. Exactly 42
  - e. This was before grease fittings were invented
2. What happens when the front wheel bearings run dry?
  - a. The front wheel falls off
  - b. Grease squirts out from behind the hubcap
  - c. They seize up and weld to the spindle
3. How should the distributor cam be lubricated?
  - a. With a light coating of Vaseline
  - b. Through a normal grease fitting
  - c. Oil can
4. What type of lubricant goes into the steering column grease fitting?
  - a. 600W, just like the rear differential
  - b. The same grease as all the other fittings
  - c. 10W-30 non-detergent motor oil
  - d. Any of the above
5. How often should you change your oil?
  - a. Every 200 miles
  - b. Every 500 miles
  - c. Every 1000 miles
  - d. Just keep adding
6. How soon should you check your breaker points gap after installing new ones?
  - a. 10 miles
  - b. 15 miles
  - c. 100 miles
  - d. Never
7. What is the perfect color of spark plug electrodes after extended use?
  - a. Pitch black and dry
  - b. Pitch black with a little oil for lubrication
  - c. Pitch black with a little gas smell
  - d. Bright white
  - e. None of the above
8. How do you know when the u-joint has enough grease?
  - a. Remove the speedometer cap and look for new grease
  - b. The grease gun will be hard to pump
  - c. Grease will squirt out around the grease fitting
9. Which generator charging amperage range is considered best?
  - a. 1-2 amps
  - b. 3-5 amps
  - c. 6-9 amps
  - d. 15-20 amps
10. What is good front tire toe-in amount?
  - a. 1/32 inches



- b. 1/16 inches
  - d. 1/8 inches
  - c. Model A's use toe-out instead
  11. How many miles between tie-rod greasings?
    - a. 500 miles
    - b. 1000 miles
    - c. 2000 miles
    - d. 5000 miles
  12. How much play should the clutch pedal have?
    - a. None, any play is bad
    - b. 1 inch
    - c. 2 inches
    - d. 4 inches
  13. What is the best way of preventing grinding gears when shifting?
    - a. Double-clutching
    - b. A low idle RPM
    - c. Pure STP in the transmission
    - d. All of the above
  14. How much pressure is recommended for Model A tires with tubes?
    - a. 50 lbs
    - b. 75 lbs
    - c. 35 lbs
    - d. None of the above
  15. How do you access the clutch thrust bearing grease fitting?
    - a. There is no such bearing on the Model A
    - b. Not accessible on the Model A
    - c. From under the car, behind the transmission
    - d. Under the floorboard, through the transmission cover.
- ANSWERS:
1. b. 28-31
  2. c. They seize up and weld to the spindle
  3. a. With a light coating of Vaseline
  4. a. 600W, just like the rear differential
  5. b. Every 500 miles
  6. c. 100 miles
  7. e. None of the above
  8. a. Remove the speedometer cap and look for new grease
  9. c. 6-9 amps
  10. b. 1/16 inches
  11. a. 500 miles
  12. b. 1 inch
  13. b. A low idle RPM
  14. c. 35 lbs
  15. d. Under the floorboard, through the transmission cover.

## IGNITION TIMING

by Les Andrews, 1998

Here's the procedure I use to set timing. It works every time for me and a way to insure you have set the timing correctly every time.

1. Set the points to .020.
2. Check the clearance between the distributor rotor and each of the four contacts inside the distributor body. You can carefully bend the rotor tab or file each of the body contacts to get .025 to .030 clearance between the rotor and each contact.
3. Set the timing pin in the timing gear cover to the detent. Remove #1 spark plug and look down the hole to make sure #1 piston at the very top of the stroke. (make sure you are observing the piston and not the valve).
4. Set the steering column spark lever full up position (full retard). With the distributor body in place, make sure the distributor plate arm is fully against the far end of the body opening. Then pull the spark lever full down and check to see that the distributor arm is fully against the other side of the body opening. This checks to see that you are getting a full 20 degrees of advance. Now reset the spark lever full up.
5. From the right side of the engine, the rotor should be pointing to about 5 o'clock position. Loosen the distributor cam screw and rotate the distributor cam clockwise to the point just before the points open on the lobe. Tighten the cam screw down.
6. With the cam screw tight, try to move the cam clockwise again, i.e., remove all backlash movement. The points should be at a position just before the points open.
7. Here is the final check. Attach a light or volt meter leads to the tip of the points arm. I made up a test light from a tail light socket with alligator clips on both pigtail wires. Clip one alligator clip to a good ground point and the other clip to the end of the point arm. When the points are closed the light is off, when the points open the light comes on.
8. Turn the ignition key on. The test light should be off. Now slowly pull the spark lever down and count the number of detents the spark lever arm passes before the test light comes on. The idea is to adjust the points, so they open (light on) as the spark lever on the steering column passes the first or second detent on the column. You may have to adjust the distributor cam several times to get this adjustment. The car should start easily with the spark lever in full up position. With this setting, drive the car with the spark lever set about two notches from the bottom position. At 50 mph on the highway, move the spark lever to full down position for full 20 degrees advance. If the starter is turning over slowly, it will help to improve the ground connection from the battery to the starter. This is done by adding another battery cable from where the braided battery strap connects to the frame cross member and connect the other end to one of the bell housing bolts just behind the starter motor. You will need a GM battery cable about 30" long. This will provide a better ground connection for the starter and sometimes allow it to turn faster.

Les Andrews, Technical Director, MAFCA 1998

**Manhattan**  
BAGEL

BREAKFAST • LUNCH • CATERING

**KAZI ZOHA**  
owner

P. 2157020528  
F. 215.702.0613  
C. 2672101095

kazizoha@yahoo.com



108 N. Flowers mill rd, • Langhorne, pa-19047 • PA 19140

## MAY RENOVATIONS

Painting, Carpentry, Landscaping,  
Paperhanging, Minor Electrical

**Kevin May**

(215) 584-3387

PA STATE INSPECTION

EMISSION TESTING



All Types of Auto & Truck Repairs  
Complete Computer Diagnostics  
39 Years of Service

114 Reetz Avenue • Hulmeville, PA 19047

215-752-3041

**BANINS AUTO**  
AUTO & TRUCK RESTYLING

Wheels, Tires,  
ELECTRONICS, & Custom  
Accessories

Expert Custom Installations

baninsauto@verizon.net  
baninsauto.com



1820 Brownsville Rd  
Trevose, PA. 19053  
215-357-3783



**GENERAL PAINTING**  
OF PENNSYLVANIA INC.

**Robert A. Miller**  
President

(610) 783-0808  
(610) 831-0134 Fax  
RMILLER@generalpainting.com



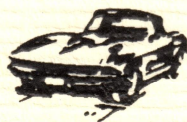
"Protecting Surfaces Since 1973"



9010 Roosevelt Blvd  
Philadelphia, PA 19115  
Ph. 215.677.3916  
Fax. 215.676.8279

Open 24 hours...7 days a week ~ Take out available  
Banquet facilities ~ Baking done on premises

**Schmidt Auto Body Inc.**



613 BATH STREET  
BRISTOL, PA 19007

SHOP (215) 785-5776  
FAX (215) 785-3864



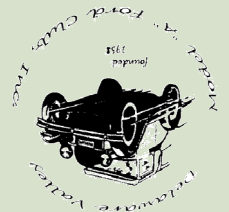
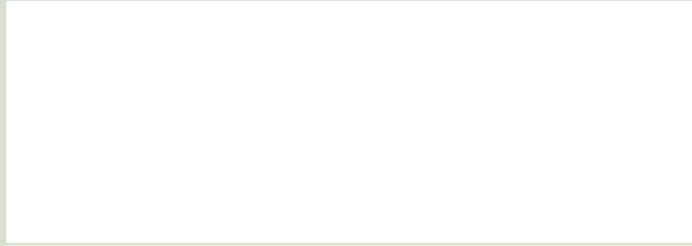
**DR. JONATHAN W. McCULLOUGH, FACO**  
FELLOW ACADEMY OF CHIROPRACTIC ORTHOPAEDISTS

Hours By Appointment  
(215) 946-0444

35 Lakeside Drive  
Levittown, PA 19054

[www.mcculloughchiropractic.com](http://www.mcculloughchiropractic.com)





1648 W. Superhighway  
Langhorne, PA. 19047



**The Etling's 1931 Deluxe Tudor Sedan**