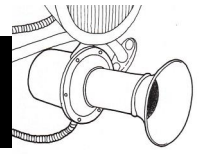
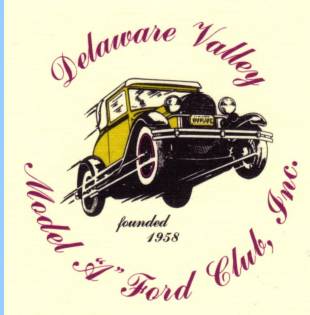




# THE KLAXON



July 2015



## Inside this Month:

President's message	2
Birthday's	2
Local Events	3
Banquet Form	5
Ford Facts	8
Memorial Day Photos	12
Parting Shot	14

And much more in this issue.....



## The Newsletter of the

## Delaware Valley Model A Ford Club, Inc.

## Founded in 1958

### Who are we:

The Klaxon is the monthly newsletter of the Delaware Valley Model "A" Ford Club, Inc. and is circulated to all club members and other interested clubs. The club meets on the first Thursday of each month at 7:30pm at Daley's Service Center, 2749 Bristol Pike, Bensalem, PA 19020.

If you wish to contribute articles for publication in the Klaxon please do so by submitting them to the editor Jim Maier. Other pertinent information can be obtained from the officers.

Technical and historical questions are encouraged and we'll do our best to get the answers. Questions can be submitted via E-Mail at: [M2116x6@comcast.net](mailto:M2116x6@comcast.net).

### Club Officers

President – Ted Kulesza	215-901-4305
Vice President – Joe Chamberlain	215-385-4989
Secretary – Don Fortune	215-698-1256
Treasurer – Don O'Hara	215-338-6368
Editor - Jim Maier	267-918-2078
National Director – Mike Etling	610-505-4504
Activities/Parades – Ted Etling	215-802-8622

<http://www.dvmafc.org/>

## President's Message



### Greetings:

Well it looks like June has proven to be one of this club's busiest months. June 6th was the Strawberry Festival in Rockledge at Holy Nativity Church. We had 9 cars and won 5 trophies. On June 12th we were at Joe Chamberlain's house for a drive-in movie which was a fun time. On June 20th we were at Spring Valley Floral Vale Nursing Home, a very enjoyable day with a great lunch served to us. And on June 25th, we displayed cars at Attleboro Nursing Home in Langhorne. It is really great to bring smiles to the faces of the residents. July looks busy too, with three parades. Lawncrest, Cheltenham and Pennypack. The great thing about our participation at parades and nursing homes is that it helps defray some of the costs of our banquet. By the way, this year our banquet will be held on September 27th at the Station House Irish Rover Restaurant in Langhorne Pennsylvania. See you at the July 2nd meeting and try to bring your cars if the weather permits.

### Ted



## Editor's Message

### Hello:

In this issue you will find the RSVP form for our annual banquet. Please send one in even if you are not going. If you do not wish to tear this out of your newsletter, there will be copies available at our meetings. In addition, if you contact me I will email a copy of the RSVP form to you.

We have three parades coming up soon. There are also numerous car shows around the area. So much to see and do, so little time ð ð .

See you on the 2nd!

### Jim

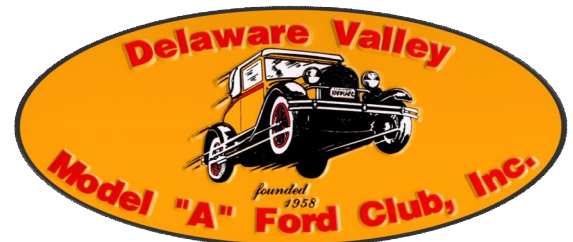
## Up Coming Events

7/2/2015 Monthly Meeting at Daley's Service Center

8/6/2015 Monthly Meeting at Daley's Service Center

## Happy Birthday for July 2015!

Joe Staehly	1
Christan Swager	8
Shirley Sadowl	8
Joyce Leichliter	10
Bill Anderson	10
Jay Fissel	16
Tina Lopez	17
Betty Brzoza	17
John Siliquini	19
John Daley	21
Pat Smith	27
Betty Fortune	29



# UPCOMING LOCAL AUTO RELATED EVENTS

## From Hemmings Motor News and other sources

See enclosed club event listing for our club events

---

### **New Holland Antique Auto Show**

**July 12, 2015**

34th annual show in the beautiful New Holland Community Park. 400 E. Jackson Street New Holland PA 17557. You must preregister in advance by 11 AM Saturday, July 11. Lots of food and live big-band music. This year's feature is tailfins and chrome. More information contact Steve 717-413-6229

**When:** July 12, 2015

**Location:**

400 E. Jackson Street  
New Holland PA, 17557

**Cost:** \$15

**To Register:** call Steve Loewen at 717-413-6229

---

### **Run With The Angels - Doylestown**

**July 12, 2015 9 a.m. - 3:30 p.m.**

Car Show, Street Rods, Customs, Muscle Cars, Trucks, Antique Vehicles. Door Prizes, Trophies, Cash Prizes.

**Sponsor:** Benefits Local Charities

**When:** July 12, 2015 9 a.m. - 3:30 p.m.

**Location:**

Route 313 & Cold Spring Creamery Road  
Doylestown PA, 18901

**Cost:** Pre-registration \$14.00. \$20.00 day of the show

**To Register:** call Bob Duke at 215-622-5449

---

### **Doylestown at Dusk Car Show**

**July 18, 2015 4:00 PM - ?**

This is an evening show held on the downtown streets of Doylestown. Open to all types of vehicles, antique, classic, custom, hot rod, truck, and motorcycle. Car pre-registration \$20.00 before 7/11/15. Registration after 7/11/15 - \$25.00.

*(Continued on page 4)*

(Continued from page 3)

**Sponsor:** Rotary Club of Doylestown

**When:** July 18, 2015 4:00 PM - 0:00 PM

**Location:**

State, Court and Clinton Streets  
Doylestown PA, 18901

**Cost:** General admission is FREE

**To Register:** call Bruce at 215-348-4221

---

## **6th Annual Roebling Museum Car Show**

**July 25, 2015 9am-3pm**

Saturday July 25th Sixth Annual Roebling Museum Car Show from 9am to 3pm. Rain date Sunday July 26th. \$15.00 Day of show only. Spectator Fee:\$5.00 under 12 Free Includes Museum visit. Roebling Museum, 100 Second Ave., Roebling NJ 08554 Fun For The Entire Family. All years makes & models, foreign & domestic along with Rat Rods welcome. Top 50 plus specialty trophies. Music by Tom E Tunes. All Emergency Vehicles free admission to display. Not Judged. Sponsored by Roebling Museum, Hosted & Judged by Movin' On KruZers. Free Registration For 1929 & Earlier Stock cars. Food, Ice Cream, Door Prizes. Vendors are welcome. Call museum for fees and details. Trophy for biggest Club Participation. Proceeds benefit Roebling Museum. Vendors or more info: Roebling Museum 609-499-7200 or info Bobbi h 215-752-0484, C 215-820-3276. Website [www.movinonkruzers.com](http://www.movinonkruzers.com)

**Sponsor:** The Roebling Museum

**When:** July 25, 2015 9am-3pm

**Location:**

100 Second Avenue  
Roebling NJ, 08554

**Cost:** \$15.00 Day Of show Only

**To Register:** call Bobbi at 215-752-0484

---

## **4<sup>th</sup> Annual Cinnaminson Girls Softball Car Show**

**July 18<sup>th</sup> 10am – 3pm**

Wood Park, Cinnaminson, NJ.

\$15.00 in advance \$20.00 Day of show 34 Classes 200 Dash Plaques

Please make checks payable to "Cinnaminson Girls Softball"

Mail to CGS c/o George Ferris - 10 Chalfont Street, Cinnaminson NJ 08077



## **DELAWARE VALLEY MODEL A FORD CLUB, INC. ANNUAL BANQUET**

**Where:** Irish Rover Station House Inn 1033 S. Bellevue Ave. Langhorne, PA. 19047

**When:** Sunday, September 27, 2015 from noon to 4pm.

**Menu:** Buffett with menu choices as follows;

- Baked Flounder with White Wine Sauce
- Roast Beef
- Chicken Parmigianino

All meals will include Salad, Entrée, Dessert and Beverages (Coffee, Tea or Soda). There will be a cash bar available.

There will be a secure area to park your Model A. Weather permitting, please bring your car.

**Cost:** \$10.00 per member and \$10.00 for member's first guest. \$25.00 for each non-member.

-----  
**Please tear off and mail your RSVP and check made payable to DVMAFC to:  
Ted Kulesza 6023 Hulmeville Road Bensalem, PA. 19020**

Member Name: \_\_\_\_\_

I WILL be attending: \_\_\_\_\_ Number attending: \_\_\_\_\_ I will NOT be attending: \_\_\_\_\_

**Cut-off date for returning the RSVP is September 14<sup>th</sup>, 2015**

**Please RSVP even if you are not attending**

**Editor's Note: If you do not wish to tear this out of your newsletter, there will be copies available at our meetings. In addition, if you contact me I will email a copy of the RSVP form to you.**

# Etling's Antique Auto

**SERVICE & REPAIR**  
**Specializing In The**  
**Model "A" Ford**

**Model "T" Ford • Early Ford V 8**

**100 SPRING VALLEY WAY**  
**ASTON, PA 19014**

**MICHAEL T. ETLING**  
**610-505-4504**

## BRATTON'S

**ANTIQUe AUTO PARTS**



**800-255-1929 Phone**  
**www.brattons.com**

800-774-1930 Fax  
1606 Back Acre Circle  
Mount Airy, MD 21771

*Your source for Quality Model A Ford Parts since 1976*

Fire Alarm - Security - C.C.T.V. - Card Access  
Phone & Data Line Services

### CUSTOM ALARM SERVICES

1289 ARBUTUS AVE.  
LANGHORNE, PA.  
(215) 752-9777

Fully Insured  
A. John Korhonen

24 Hour Monitoring  
Services & Sales

## Greg Longs Gym

85 EAST STREET RD. • FEASTERVILLE, PA 19047  
UNDER MICHAELS CRAFT & FLORAL  
215-364-1168

- 10 M SQ FT WORKOUT AREA
- 5 TONS OF FREE WEIGHTS
- CARDIO EQUIPMENT
- BODY MASTERS
- PRO-SHOP
- NAUTILUS EQUIPMENT
- HAMMER STRENGTH
- KAISER AIR MACHINE
- TANNING BEDS
- PERSONAL TRAINING

**FREE WORKOUT WITH THIS CARD**

General Insurance & Surety Bonds Since 1929  
www.brucebeaton.com

**W. Bruce Beaton**  
Company Inc.

**Janice L. Gill**  
Account Manager  
janice@brucebeaton.com

1390 Industrial Blvd. Southamptn, PA 18966  
**215.942.2800**  
215.942.2882 (fax)

MLG Business Center  
4501 Route 42, Suite 7  
Turnersville, NJ 08012  
**856.728.7351**  
856.728.7355 (fax)

**"ONE MILE AHEAD"**  
*Smith and Jones*  
**Antique Auto Parts**  
 60 Wisconsin St., W. Columbia, SC 29170  
 803/822-4141 FAX 803/822-8477

**Quality Parts  
 Same Day Shipping  
 Established 1972  
 156 Page Catalog  
 Order Desk 800-422-1928**

[www.snjparts.com](http://www.snjparts.com)

**THOMAS J. ROBERTS & DAUGHTERS**  
 REGISTERED PLUMBING & HEATING  
 (215) 744-7179



**A law firm that considers it  
 a privilege to help you.**



Personal Injury & Wrongful Death | Workers' Compensation | Estate Planning, Probate, & Estate Administration  
 Family Law | Real Estate Law | Business Law | Criminal Law | Municipal Law | School Law | Elder Law

**B C & M**  
 BEGLEY, CARLIN & MANDIO, LLP

Serving Bucks County residents and businesses for all their legal needs.

680 Middletown Boulevard | Langhorne, PA 19047 | 215-750-0110 | [www.begleycarlin.com](http://www.begleycarlin.com)

OPEN MON. - FRI. 8:30 - 5:00

*Henry's Alternator Exchange, Inc.*

**STARTERS - ALTERNATORS**  
 (REBUILT OR EXCHANGED)

Electrical Short Specialist

Phone: 215-355-0585  
 Fax: 215-396-0924  
[henryalt@verizon.net](mailto:henryalt@verizon.net)

1712 BROWNSVILLE ROAD  
 TREVOSSE, PA 19053  
[www.henrysalternator.com](http://www.henrysalternator.com)



**Dan Marseglia**  
 President

P.O. Box 696  
 Langhorne, PA 19047

[DLMSalesLLC@hotmail.com](mailto:DLMSalesLLC@hotmail.com)  
 Phone: (215) 570-4494  
 Fax: (215) 405-2538

AAACA Sept. - Oct. 1965

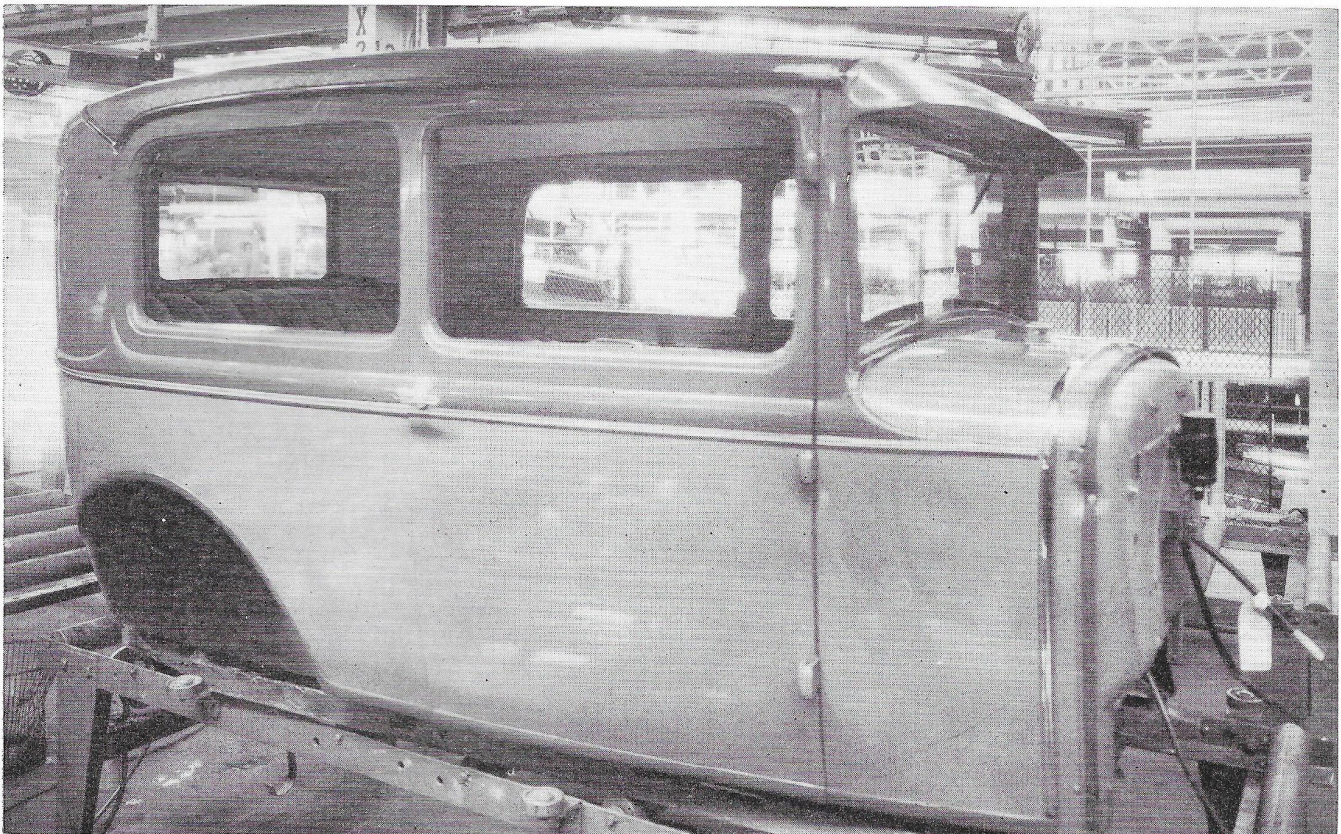
# Ford Facts

*By George DeAngelis*

Whenever antique automobiles are judged, inadvertently, there arises some controversy. Two controversial areas on the Ford Model "A" are the color of the windshield frame and welting material around the cowl. However, the most controversial area is that area of the body underneath the rear fender which is visible between the fender and tire. Some insist it should be left the color of the body and others, with authoritative confidence, insist it was painted black to match the fender. Then, there is the fellow whose uncle used to work at one of those assembly plants where they painted it the same color as the moulding.

I think that the best expression I have heard lately, is, "The Model A is like other women, they are all the same, but there is a difference."

For those who are unfamiliar with the automotive industry, as it was then and is now, it may be a little difficult to understand how the same car could be produced differently at different plants. Briefly, no two manufacturing locations are equipped with similar



The final polish operation and a 1930 Tudor sedan as it progressed along the body trim line. Note that the windshield frame was painted to match the body color and that the welting material between the body and cowl is painted. Also evident is the body color on the rear wheelhouse.

*Photo courtesy Ford Archives*



machines. Processes are modified to fit the manufacturing capabilities and these differences along with tool design will result in modifications from plant to plant. In addition, "running changes" must be allowed which result in specification deviation. Throughout the course of any one model year, these deviations will total in the thousands.

Some years ago, Ford Motor Company, in an effort to reduce storage space for keeping vital records, transferred most of its specification data on past vehicles onto microfilm. However, thousands of less important data were discarded. Among these data was the information relative to our particular problem.

Not being able to readily locate the desired information, I consulted an "Old Timer", Herbert D. Allee, at Ford's Research and Engineering Center. Mr. Allee is a body engineer, from way back, having started with Studebaker Corporation in 1922. With the aid of the Engineering Photographic file, the Ford Archives, and a phone call to several other Ford "Old

Timers", Mr. Allee was able to recreate a step-by-step body process used during the Model "A" era.

The most significant information was discovering what made up the Model "A" body before it went through the paint spray operation. This is commonly referred to as the "body in white", and consisted of all of the exterior metal panels, sill, pillars, braces, doors and decklids in place, but without any interior trim or final hardware.

It included the cowl sub-assembly with its welting material around the gas tank, door and deck hinges, but without locks, latches or regulators. A body so constructed then left the body-in-white build line and went to the paint line.

\*The finish that was used on the body was pyroxylin lacquer, the finest and most enduring finish at that time. When the body entered the paint line, it was first washed until all traces of oil or grease were removed, then the metal was etched with phosphoric

(Continued on page 76)

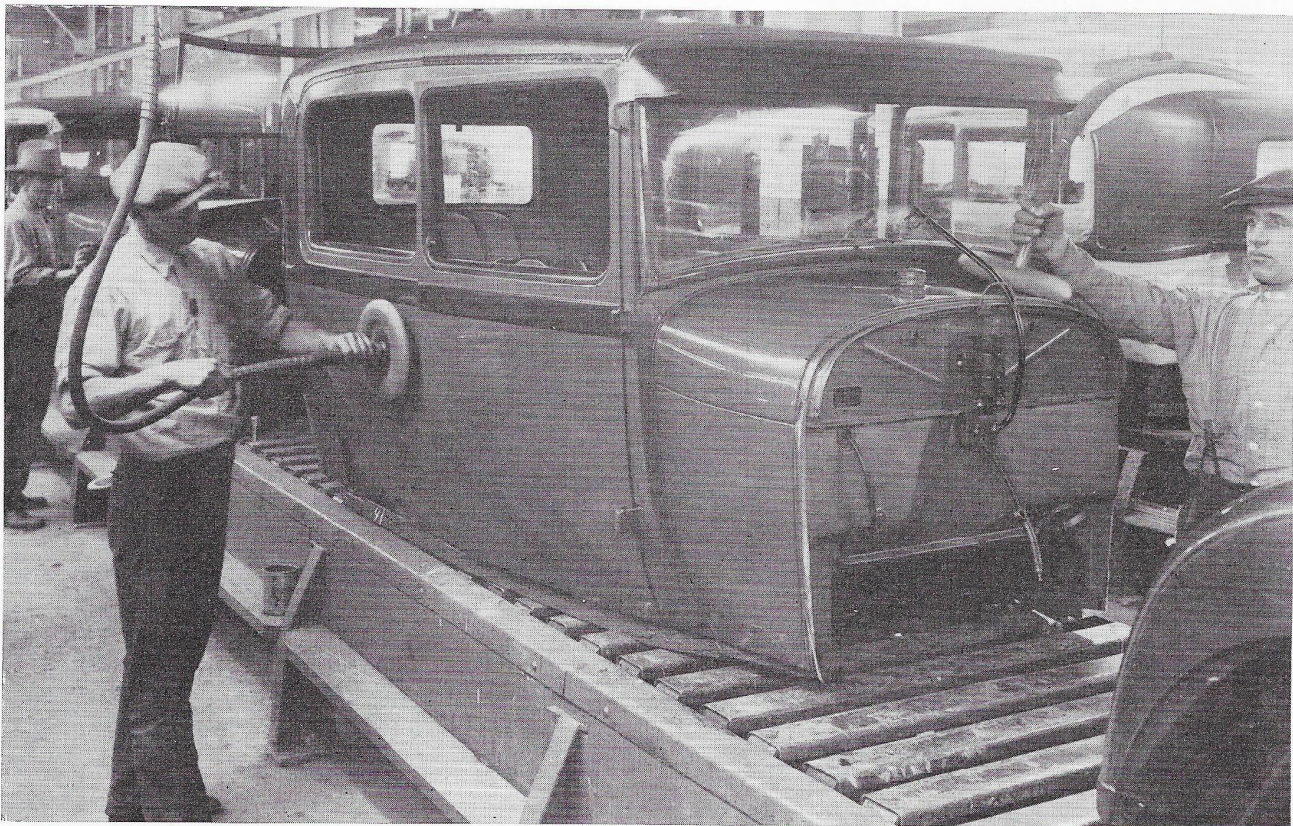
### About the Author

In this issue of *ANTIQUÉ AUTOMOBILE*, we are glad to welcome back to our pages the popular *Ford Facts* column. This one item has brought more requests to the editor to be renewed in the magazine than any other.

*Ford Facts* is an item which could not be written by just anyone, auto enthusiast or not. As to persons qualified to write it, there are probably less than ten in the entire country.

In now having George De-Angelis as our *Ford Facts*, editor, we have acquired one of the most knowledgeable Ford men in the country. George is also editor of the Model A Restorers Clubs' *MARC News*, and has been known as a Ford expert for years.

We welcome him to our staff and look forward to his column in coming issues. W. S. J.



A 1928 Model A Ford sedan completely painted and trimmed. The black paint on the rear wheelhouse is very evident.

Photo courtesy Ford Archives

# Ford Facts

(Continued from page 18)

acid. After the usual double coat of primer, it was finally sprayed with three coats of the base body color. Any two-tone or moulding trim color was applied over the base body color. The striping, of course, was the final operation.

Relative to the rear wheelhouse, Mr. Allee stated, "Since the wheelhouse on the 1928-29 models was painted with the body-in-white, it received the base body color. The rear fender flange did not cover the entire wheelhouse area, and the fender proper was, in all cases, black enamel; therefore, the wheelhouse area visible above the wheel or through it showed body color.

"Possibly many of the restorers and probably a number of the dealers took exception to this appearance and re-coated by brushing in the wheelhouse area in black as a better match with the fender. This was, however, not a process operation and was not done on 1928-29 cars at the Rouge.

"On the 1930-31 models, the addition of the moulding around the wheelhouse and lower body brought about new color schemes. If the color scheme required the lower body moulding to be painted black, then the same black was applied to the wheelhouse area. If the moulding was not black, then an additional masking operation was required before the wheelhouse area was painted black."

ANTIQUE AUTOMOBILE



Some of our members before the Memorial Day Parade

Photo by Rich Winans

CHRIS  
SILQUINI  
OPTICIAN

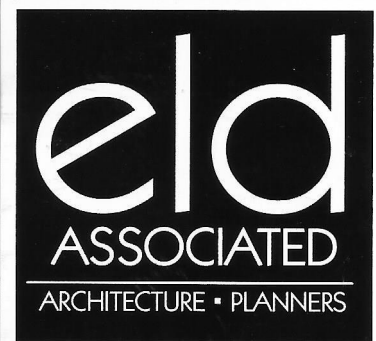


ULTIMO EYEWEAR

2540 Huntingdon Pike  
Huntingdon Valley,  
Pennsylvania 19006  
215-947-3331 P  
215-947-3346 F  
ultimoeyewear@verizon.net

Have a good topic for an article? Why not jot it down and send it to the editorial staff for publication? Feel free to send it via snail mail, email, carrier pigeon or telegram.

We are also looking for members to do short tech talks at our meetings on various topics related to Model A Fords. If you are interested, please contact one of our officers to schedule a time.



EDWIN L. DARDZINSKI RA  
Registered Architect

201 West Fairview Avenue  
Langhorne, Penna 19047  
tel/fax 215.752.6706  
Cell 215.262.6134  
email: eldarch@hotmail.com

Mike's "A" Ford-able Parts

**Mike Butcher**



124 Model A Drive, Maysville, GA 30558

email: [mike@mikes-afordable.com](mailto:mike@mikes-afordable.com) - [www.mikes-afordable.com](http://www.mikes-afordable.com)

Fax: 706 652 2492 - Phone: 706 652 3866

1 888 TRY MIKE (879 6453)



Specialising in 1928 - 1931 Model A Ford Parts

215-638-1820  
215-639-9803  
Fax 215-638-9392

State Inspection  
Emission Testing  
Towing

**DALEY SERVICE CENTER**  
Auto & Truck Repair

2749 Bristol Pike  
Bensalem, PA 19020




JOHN DALEY ENTERPRISES, INC.

Custom Building & Cabinetry

**CBC** Thomas Smith

215.817.3109

858 Sackettsford Road  
Ivyland, Pennsylvania 18974



**1909-48 Ford Parts & Accessories**



**800.242.6491**

[www.gaslightauto.com](http://www.gaslightauto.com)

Urbana, Ohio 43078

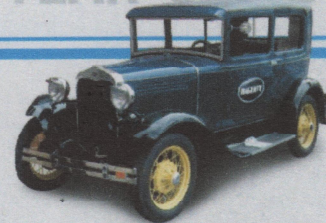
**Gaslight Auto Parts**



*Meet Jonathan* HAGERTY'S PRE-WAR SPECIALIST

**I'M JUST YOUR AVERAGE  
89-YEAR-OLD**

LIVING IN A 29-YEAR-OLD'S BODY.



Ever feel like you were born in the wrong era? Jonathan, Hagerty's pre-war car specialist, does. He drove a '30 Model A every day for a year. Jonathan's just one of our many specialists, here to make sure our clients get the knowledge and service they expect.

An absurd dedication to collector cars. It's another reason why if you have a classic, you belong with Hagerty.



The Classic Car Insurance Specialists | 877-922-1706 | [WWW.HAGERTY.COM](http://WWW.HAGERTY.COM)

# Photos from the Memorial Day Parade

Photos by Rich Winans



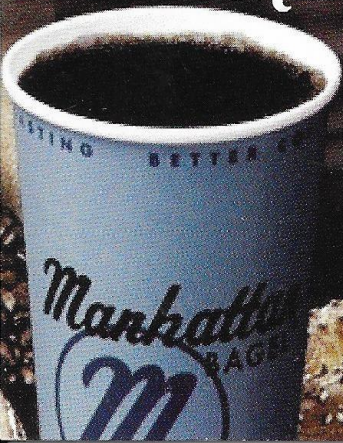
# Manhattan Bagel

Breakfast & Brunch Restaurant

108 N. Flowers Mill Rd  
Langhorne, PA 19047

**RONAK PATEL**  
OWNER

Phone: (215) 702-0528  
Fax: (215) 702-0613  
Email: BDPiezz@hotmail.com



## BANINS AUTO AUTO & TRUCK RESTYLING

Wheels, Tires,  
ELECTRONICS, & Custom  
Accessories

Expert Custom Installations

baninsauto@verizon.net  
baninsauto.com



1820 Brownsville Rd  
Trevose, PA. 19053  
215-357-3783

## MAY RENOVATIONS

Painting, Carpentry, Landscaping,  
Paperhanging, Minor Electrical

Kevin May

(215) 584-3387

## GENERAL PAINTING OF PENNSYLVANIA INC.

**Robert A. Miller**  
President



(610) 783-0808  
(610) 831-0134 Fax  
RMILLER@generalpainting.com



"Protecting Surfaces Since 1973"



9010 Roosevelt Blvd  
Philadelphia, PA 19115  
Ph. 215.677.3916  
Fax. 215.676.8279

Open 24 hours...7 days a week ~ Take out available  
Banquet facilities ~ Baking done on premises



**DR. JONATHAN W. McCULLOUGH, FACO**  
FELLOW ACADEMY OF CHIROPRACTIC ORTHOPAEDISTS

Hours By Appointment  
(215) 946-0444

35 Lakeside Drive  
Levittown, PA 19054

www.mcculloughchiropractic.com

PA STATE INSPECTION

EMISSION TESTING



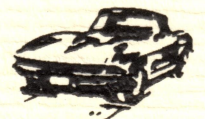
All Types of Auto & Truck Repairs  
Complete Computer Diagnostics  
39 Years of Service

114 Reetz Avenue • Hulmeville, PA 19047

215-752-3041

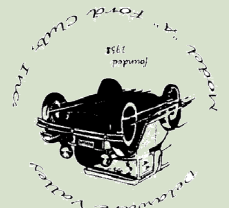
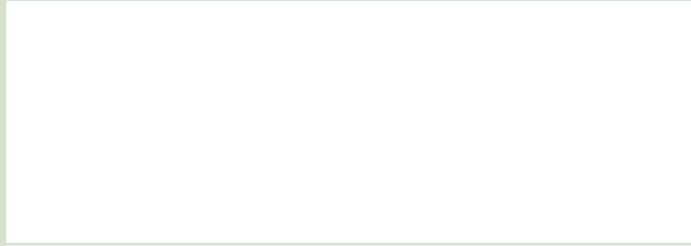


*Schmidt Auto Body Inc.*



613 BATH STREET  
BRISTOL, PA 19007

SHOP (215) 785-5776  
FAX (215) 785-3864



1648 W. Superhighway  
Langhorne, PA. 19047



Memorial Day Parade Form Up ~ Photo by Rich Winans