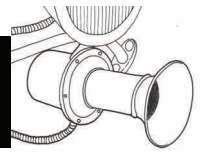




THE KLAXON



June 2013



Inside this Month:

President's message	2
Birthday's	2
Hurricane Sandy	3
Tire Codes	5
Geezer Test	6
Ann's Choice	7
Memorial Day Facts	8
Trivia	10
Members Spotlight	12

And much more in this issue.....



The Newsletter of the

Delaware Valley Model A Ford Club, Inc.

Who are we:

The Klaxon is the monthly newsletter of the Delaware Valley Model "A" Ford Club, Inc. and is circulated to all club members and other interested clubs. The club meets on the first Thursday of each month at 7:30pm at Daley's Service Center, 2749 Bristol Pike, Bensalem, PA 19020.

If you wish to contribute articles for publication in the Klaxon please do so by submitting them to the editor Steve Organ. Other pertinent information can be obtained from the officers.

Technical and historical questions are encouraged and we'll do our best to get the answers. Questions can be submitted via

E-Mail at: Sorgan@themaxwellgroup.org.

Club Officers

President - Jim Maier	267-918-2078
Vice President - Ted Kulesza	215-901-4305
Secretary - Don Fortune	215-698-1256
Treasurer - Don O'Hara	215-338-6368
Editor - Steve Organ	215-840-1259
National Director - Mike Etling	610-505-4504
Activities/Parades - Ted Etling	215-802-8622

<http://www.dvmafc.org/>

Etling's Antique Auto

**SERVICE & REPAIR
Specializing In The
Model "A" Ford**

Model "T" Ford • Early Ford V 8

100 SPRING VALLEY WAY
ASTON, PA 19014

MICHAEL T. ETLING
610-505-4504

Neshaminy Antique



Automobile Appraisals

Langhorne, Pa. 215-962-9480
www.neshaminyappraisals.com



DR. JONATHAN W. McCULLOUGH, F.A.C.O.
FELLOW ACADEMY OF CHIROPRACTIC ORTHOPAEDISTS

Hours by Appointment (215) 946-0444
35 Lakeside Drive Levittown, PA 19054
www.mcculloughchiropractic.com

Greg Longs Gym

85 EAST STREET RD. • FEASTERVILLE, PA 19047
UNDER MICHAEL'S CRAFT & FLORAL
215-364-1168

- 10 M SQ FT WORKOUT AREA
- 5 TONS OF FREE WEIGHTS
- CARDIO EQUIPMENT
- BODY MASTERS
- PRO-SHOP
- NAUTILUS EQUIPMENT
- HAMMER STRENGTH
- KAISER AIR MACHINE
- TANNING BEDS
- PERSONAL TRAINING

FREE WORKOUT WITH THIS CARD

M. Riccardi Agency

at Cornell Place

Michael E. Riccardi

P.A., E.A., A.T.A. - Real Estate Broker/Appraiser

Public Accountant - Income Tax Services
Enrolled to practice before the Internal Revenue Service

16 South State Street
Newtown, PA 18940

Office: (215) 860-3557
Fax: (215) 860-6277



9010 Roosevelt Blvd
Philadelphia, PA 19115
Ph. 215.677.3916
Fax. 215.676.8279

Open 24 hours...7 days a week ~ Take out available
Banquet facilities ~ Baking done on premises

W. Bruce Beaton
Company Inc.

General Insurance & Surety Bonds Since 1929
www.brucebeaton.com

Janice L. Gill
Account Manager

janice@brucebeaton.com

1390 Industrial Blvd. Southampton, PA 18966
215.942.2800
215.942.2882 (fax)

MLG Business Center
4501 Route 42, Suite 7
Turnersville, NJ 08012
856.728.7351
856.728.7355 (fax)

President's Message



Greetings:

That was a very nice turnout of cars at our last meeting! Thank you to all who brought them. Unfortunately, George and I had to arrive in a modern vehicle because the '28 is not running right.

We will have a representative from Hagerty Insurance visiting with us at our next meeting to discuss insurance on our antique vehicles. Be sure to ask a lot of questions.

Cars are needed for the static display at Ann's Choice on May 17th. This is a pay event. Also coming up very soon are the Memorial Day Parades. Details are in our events list.

Mark your calendars for the Ivyland 140th Celebration Day, on Saturday June 22nd. This will be a good event for us. Ivyland is a very quaint, historic borough. Our Model A's will blend right in to the town. Be sure to check out the General Store on Gough Avenue. It's a great place to grab a hot or cold sandwich for lunch. A link to a brochure with a map of the Ivyland Borough streets will be posted on our website in the upcoming events for anyone desiring a copy for the event. Further details will be in our events list.

See you on the 6th!

Jim

Up Coming Events

6/6/2013—Monthly Meeting at Daley's Service Center

7/11/2013 Monthly Meeting at Daley's Service Center

**NOTE DATE CHANGE DUE TO
JULY 4th HOLIDAY**

See Insert for More Up-Coming Events

Happy Birthday for June 2013

If we missed your birthday please let the editor know

Lou Penn	5
Cheryl Chamberlain	9
Ted Kulesza	15
Mary Ann Megonigle	17
Bill Griffith	21
Ken May	23
Ted Etling	24

Members enjoying lunch at the "free" car show at Tony's Place in Ivyland. A great time was had by all.



What Hurricane Sandy means for the classic car hobby

By Rob Sass – Hagerty Insurance – November 2012

Kori Underwood from Hagerty will be speaking at our June Meeting



Hurricane Sandy was unprecedented in terms of damage and loss to the collector car community; in fact, we estimate that between 8,000-10,000 collector cars were impacted, making Sandy the classic car hobby's most devastating single loss event ever. Its effects on the hobby will continue to be felt for many years to come. It seems a touchy subject to write about the loss of objects that nobody really needs at a time when lives and livelihoods have been lost and basic necessities are hard to come by.

But car people see it a bit differently. We've talked to countless individuals who have been powering their PCs from portable generators and are already doing what so many of us do under far more normal circumstances — trolling Craigslist and eBay looking for cars.

Not surprisingly, the losses roughly track the popularity of certain collector cars in the Northeast part of the U.S. [Corvettes](#), [Camaros](#) and [Mustangs](#) were hit the hardest.

Values May Be Affected

A cursory look at the usual sources of classic cars for sale reveals that between Hemmings.com, eBay Motors, Bring-a-Trailer.com and Craigslist, there are nowhere near 1,000 1953-82 Corvettes for sale. It seems likely that demand for replacement cars (at least in the short term) will outstrip the supply, and this can only mean one thing: Already, Hagerty clients are reporting dubious ads for collector cars for sale and meeting prices that seem in excess of what one would have expected to pay pre-storm.

The Hagerty valuation data team will monitor the situation and report our findings and what we hear from you via the valuation blog on the [Hagerty Valuation Tools](#) home page.

Continued on page 5

215-638-1820 State Inspection
215-639-9803 Emission Testing
Fax 215-638-9392 Towing

DALEY SERVICE CENTER
Auto & Truck Repair
2749 Bristol Pike
Bensalem, PA 19020



JOHN DALEY ENTERPRISES, INC.

Fire Alarm - Security - C.C.T.V. - Card Access
Phone & Date Line Services

CUSTOM ALARM SERVICES
1889 ARBUTUS AVE.
LANGHORNE, PA.
(815) 752-9777

Fully Insured
A. John Korhonen

24 Hour Monitoring
Services & Sales

Manhattan Bagel

Ronak Patel
Owner



108 N. Flowers Mill Road
Langhorne, PA 19047

Ph: (215) 702-0528
Fax: (215) 702-0613

MNRPALLC@GMAIL.COM

Stephen L. Organ, *President*

1143 Faunce St.
Philadelphia, PA 19111
Phone 215.840.1259
Fax 215.725.2615
SOrgan@TheMaxwellGroup.org
www.theMaxwellGroup.org

MEG MAXWELL
EDUCATION
GROUP

THOMAS J. ROBERTS & DAUGHTERS

REGISTERED PLUMBING & HEATING

(215) 744-7179



REG. #3300



GENERAL PAINTING
OF PENNSYLVANIA INC.

Robert A. Miller
President

(610) 783-0808
(610) 831-0134 Fax
RMILLER@generalpainting.com



"Protecting Surfaces Since 1973"



EDWIN L. DARDZINSKI RA
Registered Architect

201 West Fairview Avenue
Langhorne, Penna 19047
tel/fax 215.752.6706
cell 215.262.6134



**PLEASE
SUPPORT OUR
ADVERTISERS!**

Automotive Network
Auto - Sales
115 State Road Croydon, PA 19021
Large selection of foreign and domestic cars, trucks, and minivans

Visit our website
www.automotivenetworkonline.com
Sales 215-785-0944 Fax 215-785-0967
Jim Moule

BANINS AUTO
AUTO & TRUCK RESTYLING

Wheels, Tires,
Electronics, & Custom
Accessories

Expert Custom Installations

baninsauto@verizon.net
baninsauto.com
1820 Brownsville Rd
Trevose, PA. 19053
215-357-3783

**DUTTON ROAD
VETERINARY
CLINIC**

10901 Dutton Road
Philadelphia, PA 19154
(Ph.) 215-331-2968
(Fx.) 1-888-688-8416
clinic@ngap.org

M/W/F: 10:30-6:30
T/TH: 10:30-8:00
1st & 3rd
Saturdays: 10:00-2:00

www.NGAP-PET-CARE.com

Mark Gaughan
Executive Vice President

Phone: 267-265-3572
Email: markgaughan17@gmail.com

Corporate Office:
3551 Bristol Pike
Bensalem, PA

Schmidt Auto Body Inc.

613 BATH STREET
BRISTOL, PA 19007

SHOP (215) 785-5776
FAX (215) 785-3864

MAY RENOVATIONS
Painting, Carpentry, Landscaping,
Paperhanging, Minor Electrical

Kevin May (215) 584-3387

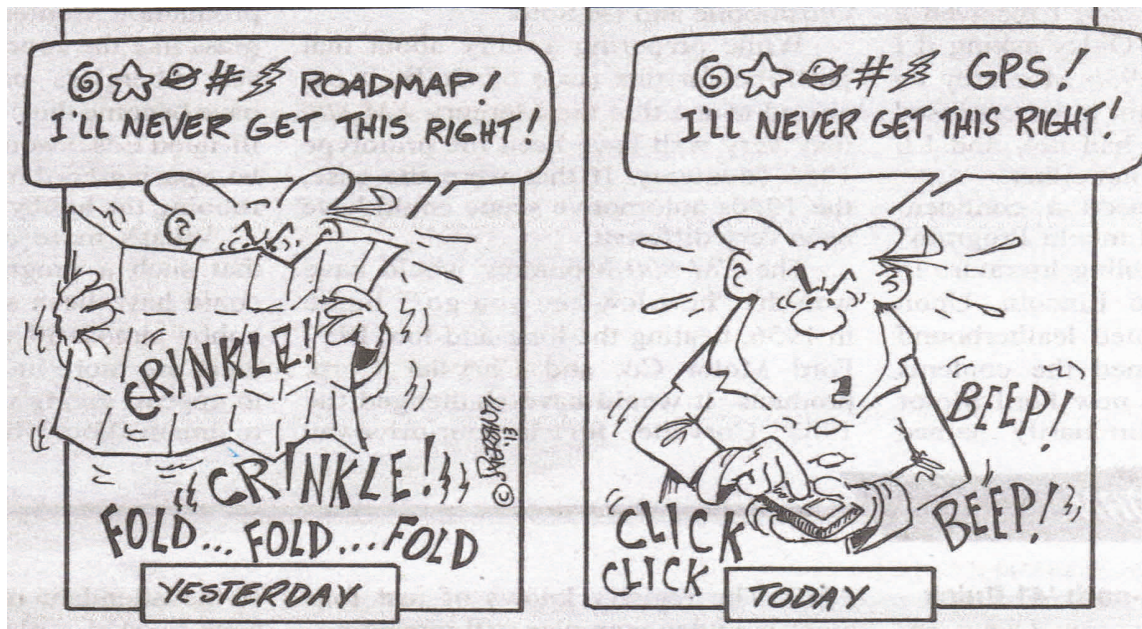
Parts Supplies

Although we have received no reports of it yet, with the sheer number of cars affected, it stands to reason that parts and materials for interior restorations may get somewhat scarce in the short term until suppliers re-order in larger quantities to meet increased demand. Things like door panels, sound insulations, carpets, seat kits, etc., will be in demand and inventories may become strained.

From a used parts perspective, the case is likely to be the opposite. There will be a boost in the used parts market as these vehicles hit the salvage auctions and are parted for everything except the soft interior parts. The Spring Carlisle and Charlotte Auto Fair shows will be the first example of this, and reputable vendors are sure to take the time to preserve the parts and will likely offer some great finds.

Storage

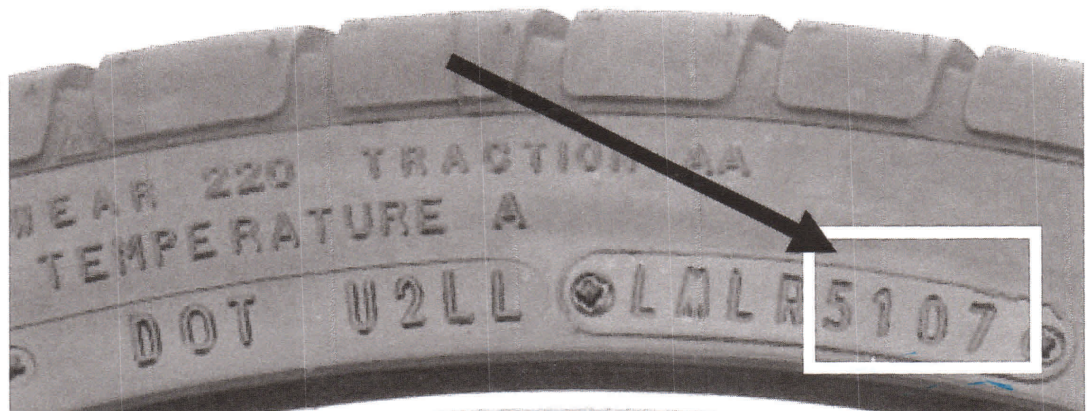
The concept of offsite storage may also get a boost as a result of Sandy. The vast majority of collector car owners store their cars in personal garages. Since it is conceivable that another event of this magnitude could take place, cautious collectors are beginning to take more seriously the notion of storing their cars away from their homes if they live in vulnerable areas, even if it means that it is less convenient to use them.



Since 2000, the week and year the tire was produced has been provided by the **last four digits** of the Tire Identification Number with the **2 digits** being used to identify the week immediately preceding the **2 digits** used to identify the year. Example of a tire manufactured since 2000 with the current Tire Identification Number format:

The tire on right was manufactured in 51st week of 2007

Courtesy HNR Member CT Edminston



The Geezer West

How many of these do you remember?...

1. Cap guns.
2. Home milk deliveries in glass bottles.
3. TV test patterns early in the morning.
4. Curb finders for your car.
5. Stamp books and redemption centers.
6. Phone booths.
7. Aluminum ice cube trays with pull handles.
8. Subway tokens.
9. Crazy Eddies.
10. Earl Scheib's auto paint jobs.
11. Mobile rides that came around the neighborhood.
12. Free road maps at service stations.
13. Seltzer bottles.
14. Doctors who made house calls.
15. Cigarette vending machines.
16. Flash cubes.
17. Lincoln Logs.
18. Johnny on the pony, running bases, stoop ball.
19. F.W. Woolworth Company.
20. Checkered cabs.

**If you remember more than a dozen,
welcome to Geezer Planet.**



www.Facebook.com/geezerplanet

Club Members Return to Ann's Choice

For the second year the Model A Club has displayed their cars for the residents of Ann's Choice.



32 members brought 26 antique cars. The 2 other clubs combined brought 15 cars. Nice Job Model A's!

Club Members Fix Member's Car

Many club members pitched –in to help member Dave Miller replace a clutch in his car.



A POLICE OFFICER POSES NEXT TO A CAR THAT FLIPPED OVER MANEUVERING
AROUND CORNER IN
ROXBURY, MASSACHUSETTS IN 1935.



MEMORIAL DAY FACTS

In honor of all those who have served in the armed services, here are a few facts and tidbits about the holiday that reminds us all of our freedom and those who fight for it!

- **620,000** - the number of men who died in the Civil War. The appalling number of deaths is what inspired Americans to honor the dead and create the beginnings of Memorial Day.
- **Decoration Day** - What people used to call Memorial Day. The name refers to the way women and children would decorate the graves of soldiers with flowers and wreaths.
- **May 1, 1865** - The first mass observance of Memorial Day. Nearly 10,000 freed slaves, missionaries, and teachers gathered in Charleston, S.C. to honor the Union dead.
- **3:00PM** - (local time) the national moment of remembrance
- **Dawn - 12PM** - (local time) When the American flag flown at half staff to honor the dead
- **Red Poppy** - traditional symbol of Memorial Day. Many veterans wear them to commemorate the day.
- **Flags In** - This tradition has been in place since 1948. On the Thursday before Memorial Day, soldiers from the 3rd U.S. Infantry (the Old Guard) place small American flags at each of the more 260,000 gravestones at Arlington National Cemetery. They patrol the cemetery 24 hours a day during the weekend to ensure that each flag remains standing.

Thanks you to all those who served in the armed services and their families. Please keep all of them in your prayers and pray for a safe journey home.



We've Revolutionized the way you find Model A Parts!

FOUR CATALOGS TO CHOOSE FROM:
 • Coupe • Pickup • Open Car • Sedan

CALL & ORDER YOUR FREE CATALOG TODAY
1-888-879-6453
www.mikes-afordable.com

YOUR MOST VERSATILE SOURCE OF QUALITY PARTS FOR OVER 25 YEARS!

Custom **&** Building
CBC Cabinetry
 Thomas Smith

215.817.3109

858 Sackettsford Road
 Ivyland, Pennsylvania 18974



Pin-Ups still needed!!
Please submit a short write-up on your car along with a picture if it is not on the club website to be added to our Member's Spotlight Feature

Engine Rebuilding,
 Restoration,
 Maintenance,
 & Repair

Timothy Foye
 (774) 213-1790
 Located in
 Middleboro, Mass



GEN III ANTIQUE AUTO
www.Gen3AntiqueAuto.com



Meet Jonathan HAGERTY'S PRE-WAR SPECIALIST

**I'M JUST YOUR AVERAGE
 89-YEAR-OLD**

LIVING IN A 29-YEAR-OLD'S BODY.



Ever feel like you were born in the wrong era? Jonathan, Hagerty's pre-war car specialist, does. He drove a '30 Model A every day for a year. Jonathan's just one of our many specialists, here to make sure our clients get the knowledge and service they expect.

An absurd dedication to collector cars. It's another reason why if you have a classic, you belong with Hagerty.



TRIVIA TIME

1. *What was the first car fitted with an alternator, rather than a direct current dynamo?*
2. *What was the first car fitted with a replaceable cartridge oil filter?*
3. *What was the first car to be offered with a "perpetual guarantee"?*
4. *What American luxury automaker began by making cages for birds and squirrels?*
5. *What car first referred to itself as a convertible?*
6. *What car was the first to have its radio antenna embedded in the windshield?*
7. *What car used the first successful series-production hydraulic valve lifters? Where was the World's first three-color traffic lights installed?*
8. *What type of car had the distinction of being GM's 100 millionth car built in the U.S. ?*
9. *Where was the first drive-in movie theater opened, and when?*
10. *What autos were the first to use a standardized production key-start system?*
11. *What did the Olds designation 4-4-2 stand for?*
12. *What car was the first to place the horn button in the center of the steering wheel?*
13. *What's the only car to appear simultaneously on the covers of Time and Newsweek?*
14. *What is the fastest internal-combustion American production car?*
15. *What automaker's first logo incorporated the Star of David?*
16. *What car was the first production V12, as well as the first production car with aluminum pistons?*
17. *What was the first car to use power operated seats?*
18. *What car delivered the first production V12 engine?*
19. *When were seat belts first fitted to a motor vehicle?*
20. *In January 1930, Cadillac debuted its V16 in a car named for a theatrical version of a 1920's film seen by Harley Earl while designing the body, What's that name?*
21. *What was the inspiration for MG's famed octagon-shaped badge?*

[\(Answers on Page 11\)](#)



Wanted:
Used set of 30-31 Deluxe Roadster Side Curtains— Stained and Torn OK
Call Don Mannherz—215-757-2623

Roster

If you didn't receive your Club 2013 Roster please contact :

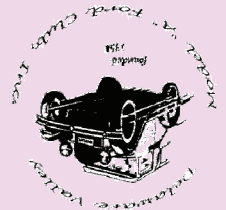
Steve Organ at

Sorgan@themaxwellgroup.org or 215-840-1259 to make arrangements to get your copy.

1. 1960 PLYMOUTH VALIANT
2. 1924 CHRYSLER
3. THE 1904 ACME-COMPANY CLOSED IN 1911
4. PIERCE ARROW
5. 1904 THOMAS FLYER
6. 1969 PONTIAC GRAND PRIX
7. 1930 CADILLAC 452 (V-16)
8. 1966 OLDS TORNAO(3/16)
9. 1933-CAMDEN NJ
10. 1949 CHRYSLERS
11. 4 BARREL, 4 SPEED-DUAL EXHAUST
12. 1915 SCRIPTS-BOOTH
13. THE MUSTANG
14. 1998 DODGE VIPER @ 192.6 MPH
15. THE DODGE BROTHERS
16. 1915 PACKARD TWIN SIX

TRIVIA TIME ANSWERS

17. 1947 PACKARD'S
18. 1915 PACKARD'S
19. BAKER ELECTRIC
20. MADAM X
21. THE SHAPE OF FOUNDER
- CECIL KIMBER'S DINING
- TABLE, MG STANDS FOR
- MORRIS GARAGES



1143 Faunce Street
Philadelphia, PA 19111-2703

Member's Spotlight



**Painting of
Dave and Rosa Miller's
1929 Leatherback
Model A**

This is a painting of Rosa and David Miller in their 1929 Fordor Leatherback done by their son.

David who drove Model A's while in school in his earlier days had wanted another Model A in his retirement.

In 2009 David and Rosa's son purchased a Model A with the help of David's brother Bob and gifted the car to David.

David has become very active in the club—Last year and this year Co-chair of our annual banquet.

While David's car may not be the show stopper that some of the members have it is driven the most. David tries to drive it everyday, weather permitting.

Say Hi to Dave and Rosa when you see them drive by.

