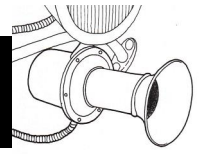




THE KLAXON



September 2016



Inside this Month:

President's message	2
Birthday's	2
Local Events	3
Club Calendar	4
Banquet Form	5
What is a Fordalette?	8
Club News	9
MARC National Tour	10

And much more in this issue.....

The Newsletter of the

Delaware Valley Model A Ford Club, Inc.

Founded in 1958

Who are we:

The Klaxon is the monthly newsletter of the Delaware Valley Model "A" Ford Club, Inc. and is circulated to all club members and other interested clubs. The club meets on the first Thursday of each month at 7:30pm at Daley's Service Center, 2749 Bristol Pike, Bensalem, PA 19020.

If you wish to contribute articles for publication in the Klaxon please do so by submitting them to the editor Jim Maier. Other pertinent information can be obtained from the officers.

Technical and historical questions are encouraged and we'll do our best to get the answers. Questions can be submitted via E-Mail at: M2116x6@comcast.net.

Club Officers

President – Ted Kulesza	215-901-4305
Vice President – Joe Chamberlain	215-385-4989
Secretary – Don Fortune	215-698-1256
Treasurer – Don O'Hara	215-338-6368
Editor - Jim Maier	267-918-2078
National Director – Mike Etling	610-505-4504
Activities/Parades – Ted Etling	215-802-8622

<http://www.dvmafc.org/>

President's Message



Greetings:

Summer is coming to a close and fall is just around the corner. Now is the time to take advantage of the good weather. Bring out your model A to the meetings, breakfast, and let's get a tour or two in before the weather turns bad !! Early in August we toured with 9 cars and 10 members to "Wings of Freedom" Aviation Museum at the old Willow Grove Naval Air Station in Warrington Pennsylvania. A great time was had by all; we had a good tour guide who explained everything in detail. Before we departed for home we stopped for a delicious lunch.

Please keep these two dates in mind: **1;** on Saturday September 10th Model A Day picnic at Dave and Shirley's Sadowl's home. Please contact them as to what you will be bringing to the picnic. 215-757-3683 or 267-467-1077. **2;** our annual Banquet, Sunday September 18th noon to 4 p.m. at the Irish Rover Station House. If you haven't yet filled out the form and sent in the money to me, please do so.

All the best,

Ted



Editor's Message

Hello everyone:

We have two events in September that you won't want to miss. International Model A Day Picnic and our Banquet. A banquet form is in this issue in case you need one.

Thank you Billy Long for bringing the Coleman stove to cook the hot dogs for last month's meeting!

See you on the 1st! *Jim*

Up Coming Events

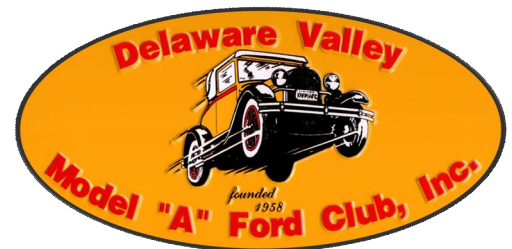
9/1 Monthly Meeting at Daley's Service Center

10/6 Monthly Meeting at Daley's Service Center

Happy Birthdays for September 2016!

If we missed your birthday please let the editor know

Jeanne Kulesza	1
M'Lu St. George	1
Brian Tonner	6
Bill Miller	9
Don Mannherz	10
Joan Ferris	11
Mary Bethman	12
Eileen O'Hara	15
John Jonas	17
Sandy Klopfenstein	23
John Fritsch	26
RuthAnn Nash	27



UPCOMING LOCAL AUTO RELATED EVENTS

From Hemmings Motor News and other sources

See enclosed club event listing for our club events

Old Frogs Chicken Cruise Every Sunday Evening

Middletown Shopping Center, 143 Woodbourne Rd. , Langhorne, PA.

Time: Starts 5pm

Sponsored by: old frogs on Facebook

Contact: 215-815-4410

Good old fashion cruise-inn...Good people...nice rides, cool tunes, good food. Chicken platters \$5.

4th Annual Maaco of Mayfair Charity Car Show

September 11, 2016 8a.m. - 2p.m.

7673 Frankford Ave, Philadelphia, PA 19136

Sunday, Sept 11th, 2016 - Rain Date Sept 18th 8 AM to 2PM Registration until 11 DOS Car Competition \$20 &/Or Sound Competition \$25 Several Blocks of Frankford Avenue to be Closed Stock, Modified, Rat Rod, Race Cars, Customs Imports, Specials Interest, Antiques, New Generation, Etc. Family Friendly Event - Free Spectator Admission 100 Plus Trophies - Best of Show +\$100, Club Participation +\$50, Paint +\$25, Interior +\$25, Engine +\$25, Modified +\$25 15 Music Trophies ICE, Loudest & Installation 15 Specialty Trophies Richie Flood Memorial Trophy Flora Flores 7ft Memorial Trophy Music - Food - Vendors Games 50/50 Chinese Auction TVs, Sports Tickets, Etc. P

Partial Proceeds Benefit The Children's Miracle Network

For More Info Contact Eddie 267-259-6409 / Lori Maaco 215-332-1000

40th Annual Fall Englishtown Swap Meet & Auto Show

September 23rd - 25th, 2016 Raceway Park, Englishtown, NJ.

Fall Carlisle Collector Car Swap Meet, Car Corral & Auction

September 28th - October 2nd Carlisle Fairgrounds, Carlisle, PA.

AACA Eastern Division National Fall Meet at Hershey

October 5th - October 8th Hershey, PA.

Delaware Valley Model A Ford Club 2016 Yearly Calendar of Events

January

7 – Club Meeting – 7:30pm Daley’s

February

4 – Club Meeting – 7:30pm Daley’s

March

3 – Club Meeting – 7:30pm Daley’s

April

7 – Club Meeting – 7:30pm Daley’s

23 – Hellertown Model A Show

May

5 – Club Meeting – 7:30pm Daley’s

30 – Bensalem / Croydon Parades

June

2 – Club Meeting – 7:30pm Daley’s

4 - Holy Nativity Strawberry Fest in Rockledge

16 - Veterans Home Display

July

4 – Lawncrest Parade – 8:30 Form up

4 – Cheltenham Parade – 11:00 Form up

7 – Club Meeting – 7:30pm Daley’s

9 - Pennypack Woods Parade

August

4 – Club Meeting – 7:30pm Daley’s

September

1 – Club Meeting – 7:30pm Daley’s

10 - International Model A Ford Day

18 – Club Banquet

October

6 – Club Meeting – 7:30pm Daley’s

5 – 8 – Hershey AACA Meet

November

3 – Club Meeting – 7:30pm Daley’s

TBD – Bristol Township Parade

December

1 – Club Meeting – 7:30pm Daley’s

Please advise the editorial staff of any additional events, as well as any changes.



DELAWARE VALLEY MODEL A FORD CLUB, INC. ANNUAL BANQUET 2016

Where: Irish Rover Station House Inn 1033 S. Bellevue Ave. Langhorne, PA. 19047

When: Sunday, September 18, 2016 from noon to 4pm.

Menu: Buffett with menu choices as follows;
Baked Flounder with White Wine Sauce
Roast Beef
Chicken Parmigianino

All meals will include Salad, Entrée, Dessert and Beverages (Coffee, Tea or Soda). There will be a cash bar available.

There will be a secure area to park your Model A. Weather permitting, please bring your car.

Cost: \$10.00 per member and \$10.00 for member's first guest. \$25.00 for each non-members guest.

**Please tear off and mail your RSVP and check made payable to DVMAFC to:
Ted Kulesza 6023 Hulmeville Road Bensalem, PA. 19020**

Member Name: _____

I WILL be attending: _____ Number attending: _____ I will NOT be attending: _____

**Cut-off date for returning the RSVP is September 10th, 2016
Each person attending must be paid up before September 10th 2016
Please RSVP even if you are not attending**

**** BLANK FORMS WILL BE AVAILABLE AT OUR NEXT MEETING ****

A law firm that considers it a privilege to help you.



Personal Injury & Wrongful Death | Workers' Compensation | Estate Planning, Probate, & Estate Administration
Family Law | Real Estate Law | Business Law | Criminal Law | Municipal Law | School Law | Elder Law

BC & M

BEGLEY, CARLIN & MANDIO, LLP

Serving Bucks County residents and businesses for all their legal needs.

680 Middletown Boulevard | Langhorne, PA 19047 | 215-750-0110 • 123 W. Bridge Street | New Hope PA 18938 | 215-862-0701

www.begleycarlin.com

OPEN MON. - FRI. 8:30 - 5:00

Henry's Alternator Exchange, Inc.

STARTERS - ALTERNATORS
(REBUILT OR EXCHANGED)

Electrical Short Specialist

Phone: 215-355-0585

Fax: 215-396-0924

henryalt@verizon.net

1712 BROWNSVILLE ROAD

TREVOSE, PA 19053

www.henrysalternator.com



Dan Marseglia
President

DLMSalesLLC@hotmail.com

P.O. Box 696

Langhorne, PA 19047

Phone: (215) 570-4494

Fax: (215) 405-2538

THOMAS J. ROBERTS & DAUGHTERS

REGISTERED PLUMBING & HEATING

(215) 744-7179



REG. #3300

"ONE MILE AHEAD"
Smith and Jones
Antique Auto Parts
60 Wisconsin St., W. Columbia, SC 29170
803/822-4141 FAX 803/822-8477

Quality Parts
Same Day Shipping
Established 1972
156 Page Catalog
Order Desk 800-422-1928

www.snjparts.com

Greg Longs Gym

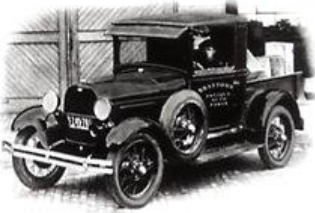
85 EAST STREET RD. • FEASTERVILLE, PA 19047
UNDER MICHAELS CRAFT & FLORAL
215-364-1168

- 10 M SQ FT WORKOUT AREA
- 5 TONS OF FREE WEIGHTS
- CARDIO EQUIPMENT
- BODY MASTERS
- PRO-SHOP
- NAUTILUS EQUIPMENT
- HAMMER STRENGTH
- KAISER AIR MACHINE
- TANNING BEDS
- PERSONAL TRAINING

FREE WORKOUT WITH THIS CARD

BRATTON'S

ANTIQUE AUTO PARTS



800-255-1929 Phone
www.brattons.com

800-774-1930 Fax
1606 Back Acre Circle
Mount Airy, MD 21771

Your source for Quality Model A Ford Parts since 1976

General Insurance & Surety Bonds Since 1929

www.brucebeaton.com

W. Bruce Beaton
Company Inc.

Janice L. Gill

Account Manager

janice@brucebeaton.com

1390 Industrial Blvd. 4501 Route 42, Suite 7
Southampton, PA 18966 Turnersville, NJ 08012
215.942.2800 **856.728.7351**
215.942.2882 (fax) 856.728.7355 (fax)

Fire Alarm - Security - C.C.T.V. - Card Access
Phone & Date Line Services

CUSTOM ALARM SERVICES

1289 ARBUTUS AVE.
LANGHORNE, PA.
(215) 752-9777

Fully Insured
A. John Korhonen

24 Hour Monitoring
Services & Sales

Etling's Antique Auto

SERVICE & REPAIR

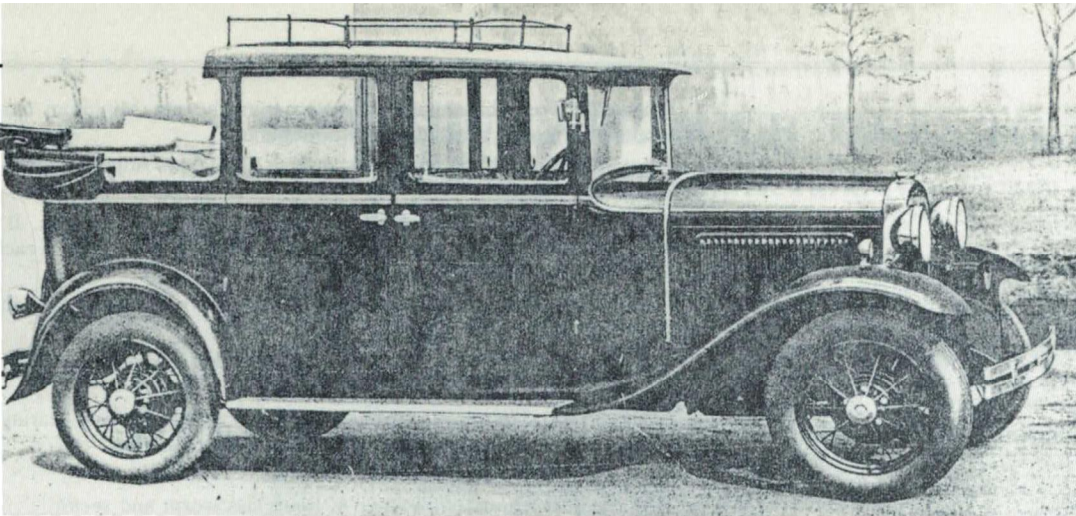
Specializing In The

Model "A" Ford

Model "T" Ford • Early Ford V 8

100 SPRING VALLEY WAY
ASTON, PA 19014

MICHAEL T. ETLING
610-505-4504



WHAT WAS A FORDALETTE?

By Steve Pargeter
Nashua, New Hampshire

Have you ever heard of a seven seat Model "A" with a 117 $\frac{1}{16}$ " wheelbase? This model was news to me but since I am new to the Model "A" hobby, I assumed it was just another common story that I hadn't heard. The more I checked with local experts, the more convinced I became that not many people had ever seen or heard of the Fordalette model. The following details are what I learned and includes the available pictures. If any one has more information, I would appreciate hearing from them.

The Fordalette was produced at Manchester, England from October to December 1931 and was described in the June 1931 *The Ford Times*, pages 397 and 398. It was created for people conducting public hiring services, in reality an early version of the stretch limousine. Sales were very small with only five made.

The front of the car was normal for an English car, equipped with right hand drive. The passenger compartment was special since it included two jump seats called "cricket" seats which folded up into the back of the driver's seat. The body was a six window style with all windows fully functional. It contained a dividing window between the driver and passengers like any proper English limousine. The most striking feature of the body was the convertible top on the rear of the car called the head, which was much like a cabriolet on a four door sedan.

The price was 335 pounds which was equivalent to \$1,508, so this was a very expensive Model "A" and probably helps explain why so few were made. The Fordalette was equipped with the "large" 200 cubic inch engine rather than the "normal" 124.6 cubic inch English engine. The car also came equipped with two rear view mirrors and a luggage rack on the top. The weight of the car was not given but I would suspect it was the heaviest Model "A" as well as the longest.

Because the Fordalette was built especially for those people who catered for public hire, it was in every way a deluxe vehicle. The body finish was Royal Blue pyroxylin cellulose and the upholstery was in blue leather to match. The rear seat, which accommodated three passengers in comfort, was fitted with arm rests. The two auxiliary seats folded completely out of the way when not in use. The folding back collapsed easily and quickly making the Fordalette an airy, open car for fine weather. The collapsible portion of the head was trimmed in black enamelled hide. Sliding windows behind the driver's seat allowed conversation between the driver and

passengers. A roof light was fitted and all six windows had winders that were nickel plated as was the ashtray which was within convenient reach of all passengers. A rear view mirror was provided for the passengers in addition to the one fitted for the driver. A small parcel net was fitted. Luggage rails were fitted to the top of the body. Stainless steel was largely used in the external bright work.

The Fordalette was built on to the well known Ford Model "A" chassis which was extended to give a wheel base of 117 $\frac{1}{16}$ inches. This ensured ample room for all passengers.

Important dimensions: Length of body from instrument board to back of rear seat 105 $\frac{1}{2}$ inches. Height from floor to top of roof 74 inches. Width of rear seat 48 $\frac{1}{2}$ inches. Width of front seat 44 inches. Width of collapsible seats each 13 inches. Overall length for garage purposes 13 feet, 11 inches. Width of car 5 feet, 7 inches.

Equipment: safety glass windscreen, 4 hydraulic double acting shock absorbers, 4-wheel brakes, front and rear bumpers, 5 detachable wheels and tires, cellulose and stainless steel finish, combination stop and tail light, thief-proof ignition lock, speedometer, petrol gauge, automatic windscreen wiper, grease gun lubrication, 2 driving mirrors, ashtray, parcel net.

Specifications:

Engine: four cylinder. Bore: 3.875 inches. Stroke: 4.25 inches. Treasury rating: 24.03 h.p. Brake horse power: 40 at 2,200 revolutions per minute. Detachable cylinder head. Cylinders cast *en bloc* and together with the top half of the crankcase.

Valves: special silicon chromium steel. Special mushroom ended stem.

Crankshaft: three main bearings babbit lined. Thrust taken on rear bearing. Diameter of main bearings: 1 $\frac{1}{8}$ ". Diameter of crankpins: 1 $\frac{1}{2}$ ". Material: special Ford carbon manganese steel.

Pistons: aluminum alloy.

Rings: three rings are fitted above the gudgeon pin on each piston.

Gudgeon Pins: fully floating in piston and rod. Hollow 1" diameter.

Lubrication: type: pump, splash and gravity feed. Gravity feed to main bearings and camshaft bearings. Gear oil pump. Connecting rods, gudgeon pins and cylinder walls splash lubricated. Bayonet-type dip stick fitted.

Cooling system: pump assisted thermo syphon. Ford centrifugal impeller pump. Fan of Ford make and design. "V" fan belt $\frac{3}{8}$ " wide.

Fuel system: carburetor: Ford. Gravity feed from tank under scuttle. Tank capacity 9 gallons. Ford filter under bonnet.

Engine suspension: sprung front end support to eliminate vibration.

Exhaust system: special Ford silencer.

Ignition system: make: Ford. Current source: battery. Manual spark control, giving 20° advance. Firing order: 1, 2, 4, 3. $\frac{7}{8}$ " diameter spark plug.

Starter motor: Ford.
Battery: Ford 6 volts. 80 amp-hour capacity.
Generator: Ford.
Safety glass windscreen.
Windscreen wiper: automatic.
Lighting system: 8½" diameter rustless steel head lamps fitted with fluted anti-dazzle lenses. Parabolic rustless steel side lamps. Head lamps can be switched off, leaving side and tail lights on.
Horn: electric, motor driven.
Chassis: 117½" wheelbase. Lubrication: push-on pressure grease gun. Location of serial numbers on left side of engine.
Transmission: Ford. Giving 3 speeds and reverse. Gearbox built integral with the engine. Bearings: spigot, roller. Reverse idler, bronze. Main shaft front, roller. Layshaft front, roller. Layshaft rear, roller.
Clutch: Ford dry plate.
Universals: Ford, mechanical.

Rear axle: Ford three-quarter floating spiral bevels. Minimum road clearance 9". Roller bearings fitted throughout.
Front axle: Ford "I" section beam, reverse Elliot type. Adjustable roller bearings for wheels.
Foot brake: Ford. Acting on all four wheels. Diameter of drums, 11". Method of application: mechanical internal expanding. Two shoes in each drum. Width of lining 1½".
Hand brake: Ford. Operates independent internal expanding self-energizing shoes in rear drums.
Springs: Transverse semi-elliptic, made of Ford chrome steel. Front spring, 1¼" wide; rear spring, 2¼".
Wheels: Ford. Electrically welded steel spoke wheels. Timken bearings in front hubs. Roller bearings in rear hubs. Well-base rims.
Tires: 19 x 4.75" wired on balloon cord.
Steering gear: Ford. Irreversible ¾ hourglass worm and sector.

Photo reprinted from June 1931 The Ford Times.



Club News and Events from Billy Long:

Thursday morning, August 11th. Billy Long reports that he, Joe Weldon, Dave Sadowl, Don Mannherz, Bob Russell, Don Fortune and Bob Kehan met before convoying to a Dunkin Donuts on County Line Road. Here they met John Sheaffer and Ted Kulesza. The entire group then traveled to the Wings of Freedom Aviation Museum on Easton Road in Horsham, PA. The Museum opened at 10 am and our members received a guided tour of the displays inside and out. After visiting the gift shop at the end, they went to lunch at a diner on Easton Road before heading home midafternoon. Other than the excessive heat, it was a very nice club outing.

**Once again this year Joan Ferris is selling calendars
to benefit the Viet Nam Veteran's.**

The calendar will contain a PA Lottery Number for the evening drawing.

The cost is \$40.00. Contact Joan directly at: 1-856-662-3239

HELP SUPPORT THE VIET NAM ERA VETERAN'S

Please Support Our Troops

PHILADELPHIA

VIETNAM VETERANS

Your Lucky No.
A 649

"If You Enjoy Your Freedom
Thank A Vet"

\$40.00

God Bless America
And God Bless Our Troops

MEMORIAL SOCIETY

It's Our Duty To Remember

This Calendar is Dedicated To All Who Served and All Who Never Came Home

POW/MIA
FOR THE NOT FORGOTTEN



MARC Members *Everywhere...*

The Hudson Valley Region invites you to attend the

2016 MARC National Tour

September 20 – 22

in one of the most historic and scenic areas in all of New York State.

These *Activities Pages* include:

Registration, Indemnity & Tour forms

Club Contact & Hotel Information

Activity List and Highlight Sketches

Early entry is worth doing (it saves you \$\$\$\$\$). Registration postmarked no later than July 1st is just \$52 (per car). After that, it's \$75 (no registrations after August 1st). But even more important, in order to make this event as enjoyable as possible, we are limiting participation to 250 cars. So late registrants may miss seeing the beauty in our little corner of the world and the many Tours we've planned to show it off!

Please note: Cancellations prior to August 1st are subject to a \$20.00 fee. Sorry, no refunds of Registration fees will be granted after August 1st.



We look forward to seeing you!

Please Note:

The complete info packet for this invite is 15 pages, too many to print here. It is available on our website at www.dvmafc.org or contact the editor for a copy.

Mike's "A" Ford-able Parts

Mike Butcher



124 Model A Drive, Maysville, GA 30558

email: mike@mikes-afordable.com - www.mikes-afordable.com

Fax: 706 652 2492 - Phone: 706 652 3866

1 888 TRY MIKE (879 6453)



Specialising in 1928 - 1931 Model A Ford Parts

215-638-1820
215-639-9803
Fax 215-638-9392

State Inspection
Emission Testing
Towing

DALEY SERVICE CENTER
Auto & Truck Repair

2749 Bristol Pike
Bensalem, PA 19020



JOHN DALEY ENTERPRISES, INC.

Custom Building & Cabinetry
CBC Thomas Smith

215.817.3109

858 Sackettsford Road
Ivylnd, Pennsylvania 18974



1909-48 Ford Parts & Accessories

800.242.6491

www.gaslightauto.com

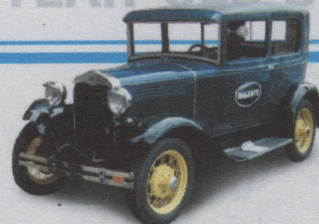


Gaslight Auto Parts

Meet Jonathan HAGERTY'S PRE-WAR SPECIALIST

**I'M JUST YOUR AVERAGE
89-YEAR-OLD**

LIVING IN A 29-YEAR-OLD'S BODY.



Ever feel like you were born in the wrong era? Jonathan, Hagerty's pre-war car specialist, does. He drove a '30 Model A every day for a year. Jonathan's just one of our many specialists, here to make sure our clients get the knowledge and service they expect.

An absurd dedication to collector cars. It's another reason why if you have a classic, you belong with Hagerty.



The Classic Car Insurance Specialists | 877-922-1706 | WWW.HAGERTY.COM

Neshaminy Antique



Automobile Appraisals

Langhorne, Pa. 215-962-9480

www.neshaminyappraisals.com

Have a good topic for an article? Why not jot it down and send it to the editorial staff for publication? Feel free to send it via snail mail, email, carrier pigeon or telegram.

We are also looking for members to do short tech talks at our meetings on various topics related to Model A Fords. If you are interested, please contact one of our officers to schedule a time.

Want to Trade

94 Class A 34ft. Motorhome, Cummins diesel, 49,204 miles, For a Model A. 1930/1931 Deluxe Roadster preferred.

Contact: Timothy Foye timfoye@gmail.com

FOR SALE:

1930 Model A Ford Tudor Turnkey Car . Contact: Jim 215-460-1514 Photo Below:



J&L VINTAGE TREASURES

Jim & Lisa

A little bit of everything ... from pre-loved vintage treasures and antiques to current clothing, jewelry and accessories.



info@jlvintagetreasures.com
jlvintagetreasures.com

**C H R I S
 S I L I Q U I N I
 O P T I C I A N**



ULTIMO EYEWEAR

2540 Huntingdon Pike
 Huntingdon Valley,
 Pennsylvania 19006
 215-947-3331 P
 215-947-3346 F
ultimoeyewear@verizon.net

eld
 ASSOCIATED
 ARCHITECTURE • PLANNERS

EDWIN L. DARDZINSKI RA
 Registered Architect

201 West Fairview Avenue
 Langhorne, Penna 19047
 tel/fax 215.752.6706
 Cell 215.262.6134
 email: eldarch@hotmail.com



Lieutenant Commander Bill Grun driving his 1931 Roadster in the Doylestown Memorial Day Parade.

Manhattan
BAGEL

BREAKFAST • LUNCH • CATERING

KAZI ZOHA
owner

P. 2157020528
F. 215.702.0613
C. 2672101095

kazizoha@yahoo.com



108 N. Flowers mill rd, • Langhorne, pa-19047 • PA 19140

MAY RENOVATIONS

Painting, Carpentry, Landscaping,
Paperhanging, Minor Electrical

Kevin May

(215) 584-3387

PA STATE INSPECTION

EMISSION TESTING



All Types of Auto & Truck Repairs
Complete Computer Diagnostics
39 Years of Service

114 Reetz Avenue • Hulmeville, PA 19047

215-752-3041

BANINS AUTO
AUTO & TRUCK RESTYLING

Wheels, Tires,
ELECTRONICS, & Custom
Accessories

Expert Custom Installations

baninsauto@verizon.net
baninsauto.com



1820 Brownsville Rd
Trevose, PA. 19053
215-357-3783



GENERAL PAINTING
OF PENNSYLVANIA INC.

Robert A. Miller
President

(610) 783-0808
(610) 831-0134 Fax
RMILLER@generalpainting.com



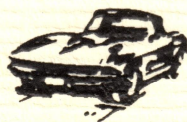
"Protecting Surfaces Since 1973"



9010 Roosevelt Blvd
Philadelphia, PA 19115
Ph. 215.677.3916
Fax. 215.676.8279

Open 24 hours...7 days a week ~ Take out available
Banquet facilities ~ Baking done on premises

Schmidt Auto Body Inc.



613 BATH STREET
BRISTOL, PA 19007

SHOP (215) 785-5776
FAX (215) 785-3864

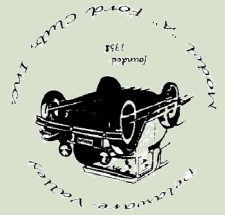
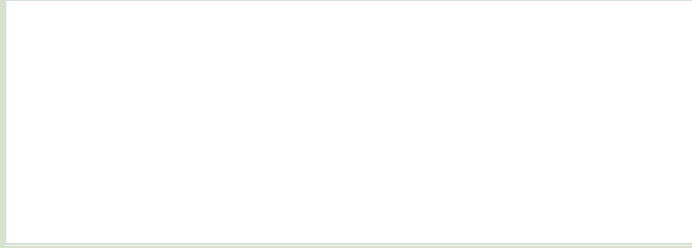


DR. JONATHAN W. McCULLOUGH, FACO
FELLOW ACADEMY OF CHIROPRACTIC ORTHOPAEDISTS

Hours By Appointment
(215) 946-0444

35 Lakeside Drive
Levittown, PA 19054

www.mcculloughchiropractic.com



1648 W. Superhighway
Langhorne, PA. 19047



A view of some of our cars that attended our past meeting